

LOC/DME I-BPK 111.95 Chan 56(Y)	APP CRS 049°	Rwy Ldg TDZE 928 Apt Elev 928
--	------------------------	---

ILS or LOC RWY 5

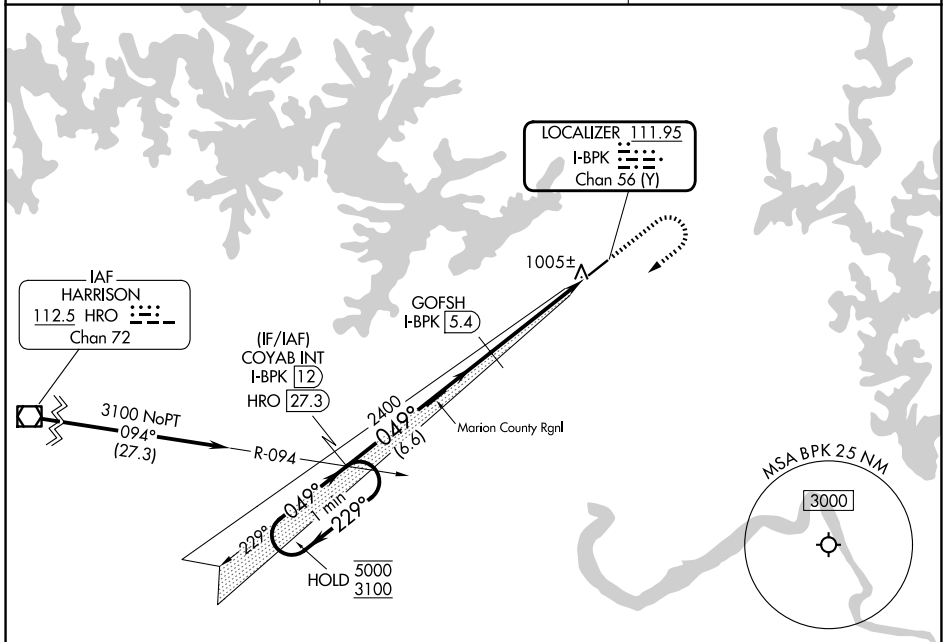
BAXTER COUNTY (BPK)

DME required for LOC only.

⚠ Circling NA for Cat C, southeast of Rwy 5-23. Procedure NA at night.
 ⚠ Rwy 5 helicopter visibility reduction below 1 SM NA.

MISSED APPROACH: Climb to 2000, then climbing right turn to 3100 on heading 230° and HRO R-094 to COYAB INT/I-BPK 12 DME and hold.

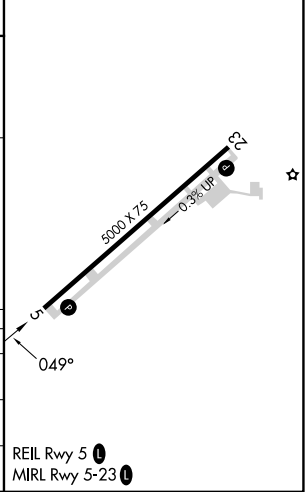
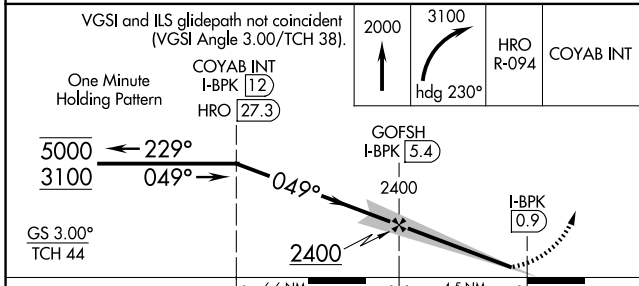
ASOS 133.975	MEMPHIS CENTER 126.85 281.55	UNICOM 123.0 (CTAF) 0
------------------------	--	---------------------------------



SC-1, 16 APR 2026 to 14 MAY 2026

SC-1, 16 APR 2026 to 14 MAY 2026

ELEV 928	TDZE 928
----------	----------



CATEGORY	A	B	C	D
S-ILS 5	1178-1	250 (300-1)		NA
S-LOC 5	1260-1	332 (400-1)		NA
CIRCLING	1400-1	472 (500-1)	1460-1½ 532 (600-1½)	NA

REIL Rwy 5 0
MIRL Rwy 5-23 0