

APP CRS	Rwy Ldg	5000
229°	TDZE	919
	Apt Elev	928

RNAV (GPS) RWY 23

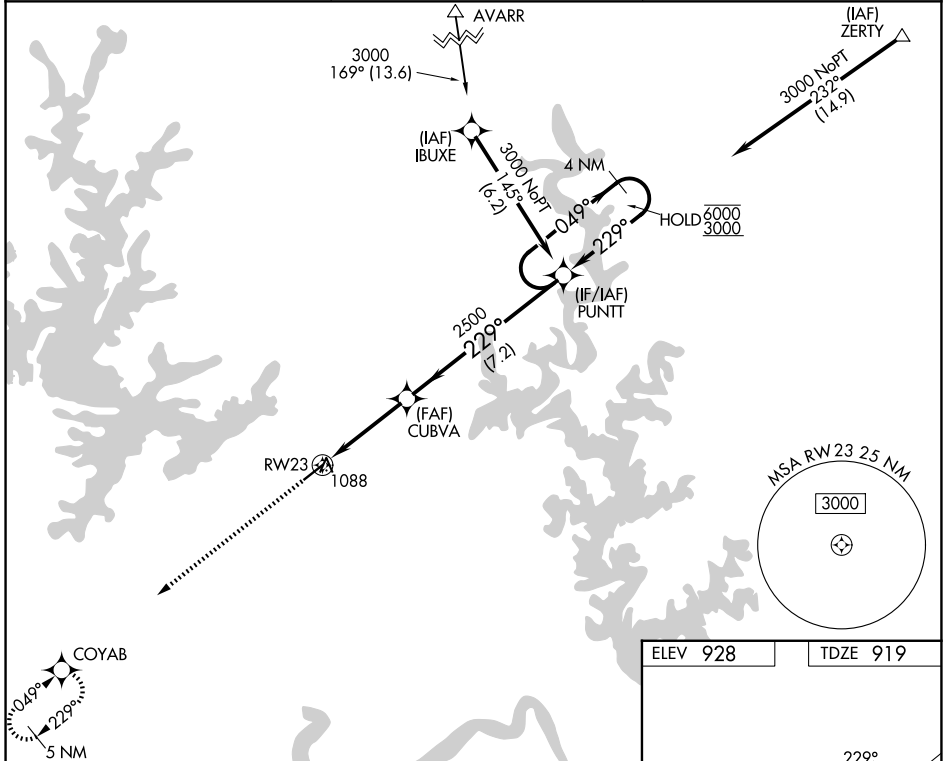
BAXTER COUNTY (BPK)

RNP APCH - GPS.

- Procedure NA at night. Rwy 23 helicopter visibility reduction below 1 SM NA.
- Circling NA for Cat C southeast of Rwy 5-23.

MISSED APPROACH: Climb to 3100 direct COYAB and hold.

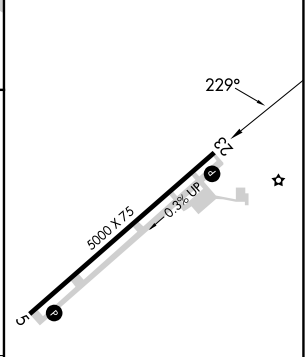
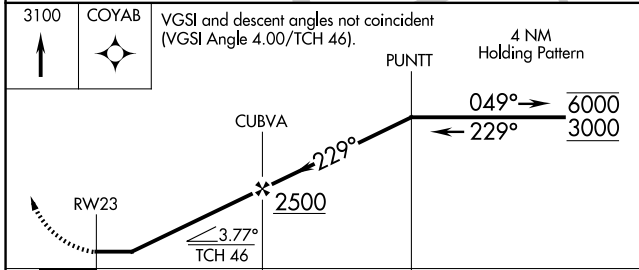
ASOS 133.975	MEMPHIS CENTER 126.85 281.55	UNICOM 123.0 (CTAF)
------------------------	--	-------------------------------



SC-1, 16 APR 2026 to 14 MAY 2026

SC-1, 16 APR 2026 to 14 MAY 2026

ELEV 928	TDZE 919
----------	----------



CATEGORY	A	B	C	D
LNVA MDA	1360-1	441 (500-1)	1360-1 3/8 441 (500-1 3/8)	NA
CIRCLING	1400-1	472 (500-1)	1460-1 1/2 532 (600-1 1/2)	NA

REIL Rwy 5 **0**
MIRL Rwy 5-23 **0**