

| | | | |
|--|------------------------|-----------------------------|---|
| WAAS CH 40237 W14A | APP CRS 141° | Rwy Ldg TDZE Apt Elev | 3851 1117 1122 |
|--|------------------------|-----------------------------|---|

RNAV (GPS) RWY 14

WEBSTER CITY MUNI (EBS)

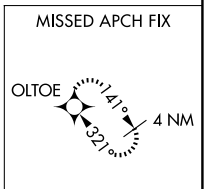
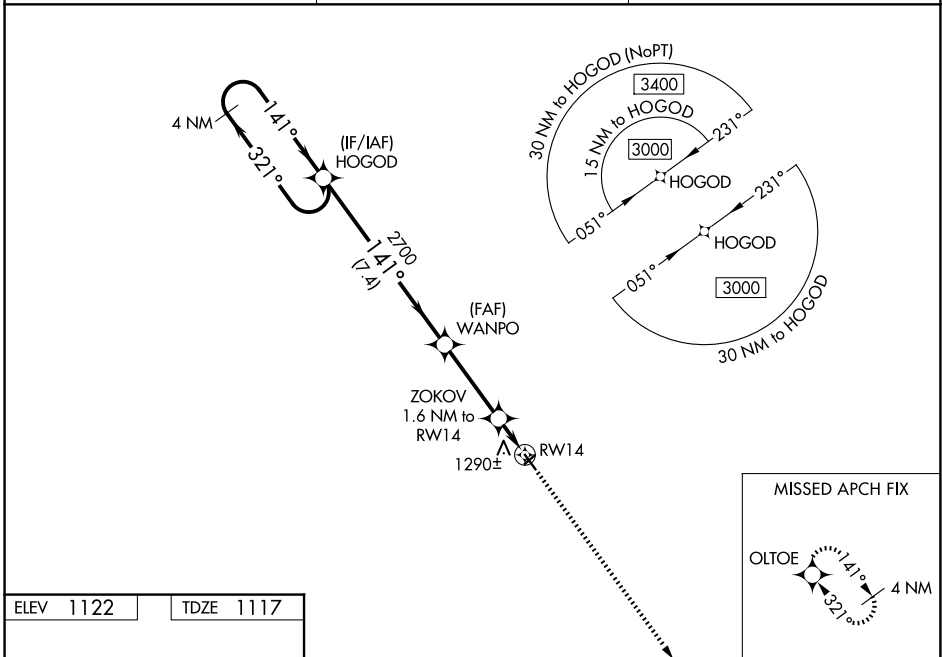
⚠ Baro-VNAV NA when using Clarion altimeter setting. For uncompensated Baro-VNAV systems, LNAV/VNAV NA below -17°C (2°F) or above 54°C (130°F). DME/DME RNP-0.3 NA. When local altimeter setting not received, use Clarion altimeter setting and increase all DAs 49 feet, and all MDA 60 feet; increase LNAV/VNAV all Cats visibility 1/8 mile. Helicopter visibility reduction below 3/4 SM NA.

MISSED APPROACH: Climb to 3000 direct OLTOE and hold.

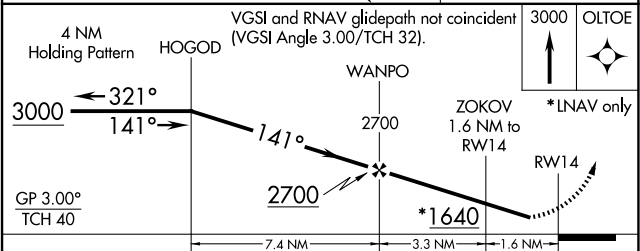
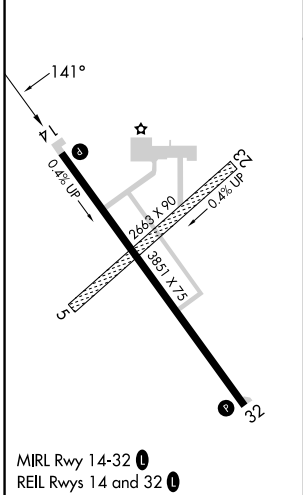
AWOS-3
127.825

MINNEAPOLIS CENTER
134.0 288.3

UNICOM
122.8 (CTAF) 0



| | |
|-----------|-----------|
| ELEV 1122 | TDZE 1117 |
|-----------|-----------|



| CATEGORY | A | B | C | D |
|--------------|---------|--------------|---|----|
| LPV DA | 1367-1 | 250 (300-1) | | NA |
| LNAV/VNAV DA | 1463-1¼ | 346 (400-1¼) | | NA |
| LNAV MDA | 1540-1 | 423 (500-1) | | NA |
| CIRCLING | 1600-1 | 478 (500-1) | | NA |

NC-3, 16 APR 2026 to 14 MAY 2026

NC-3, 16 APR 2026 to 14 MAY 2026