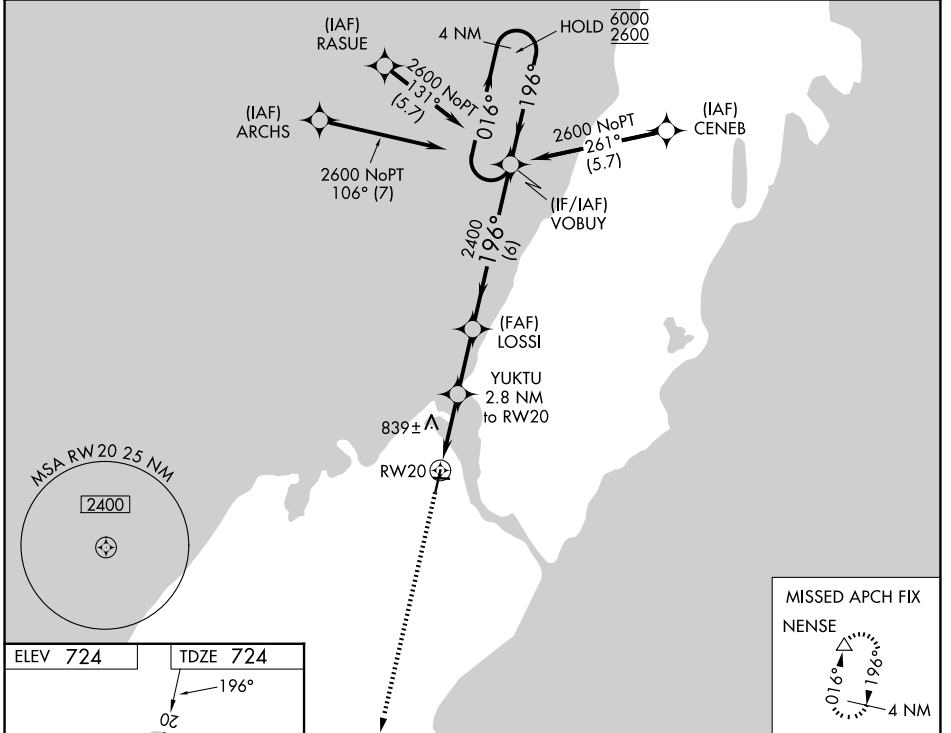


WAAS CH 86304 W20A	APP CRS 196°	Rwy Ldg TDZE 724 Apt Elev 724	4599
--	------------------------	---	-------------

RNAV (GPS) RWY 20

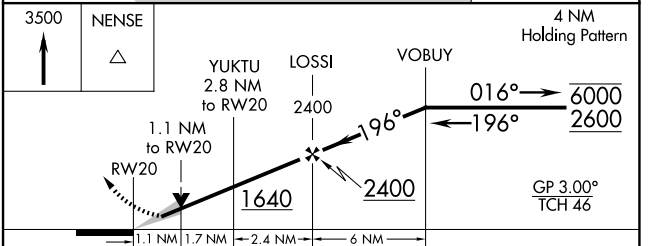
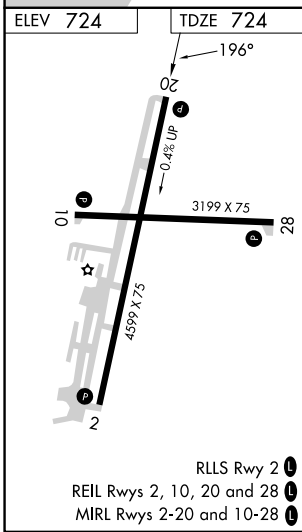
DOOR COUNTY CHERRYLAND (SUE)

RNP APCH - GPS.		MISSED APPROACH: Climb to 3500 direct NENSE and hold.
AWOS-3PT 128.325	GREEN BAY APP CON ★ 119.25 338.2	UNICOM 122.7 (CTAF) 0



EC-3, 16 APR 2026 to 14 MAY 2026

EC-3, 16 APR 2026 to 14 MAY 2026



CATEGORY	A	B	C	D
LPV DA		974-¾	250 (300-¾)	
LNAV/VNAV DA		974-¾	250 (300-¾)	
LNAV MDA		1100-1	376 (400-1)	
CIRCLING	1280-1	556 (600-1)	1280-1½ 556 (600-1½)	1340-2 616 (700-2)