

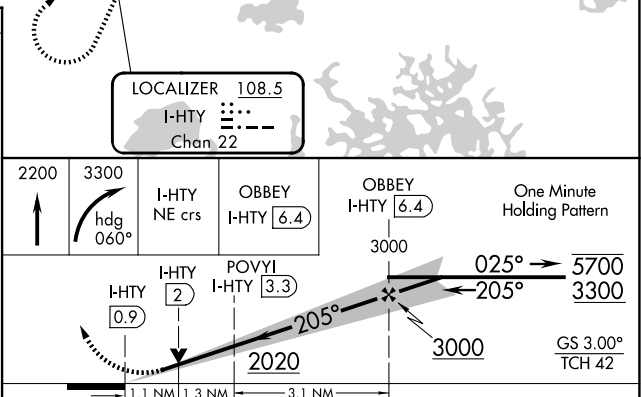
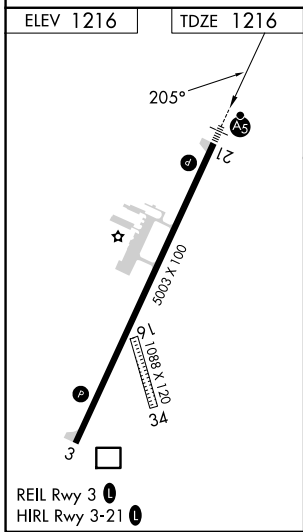
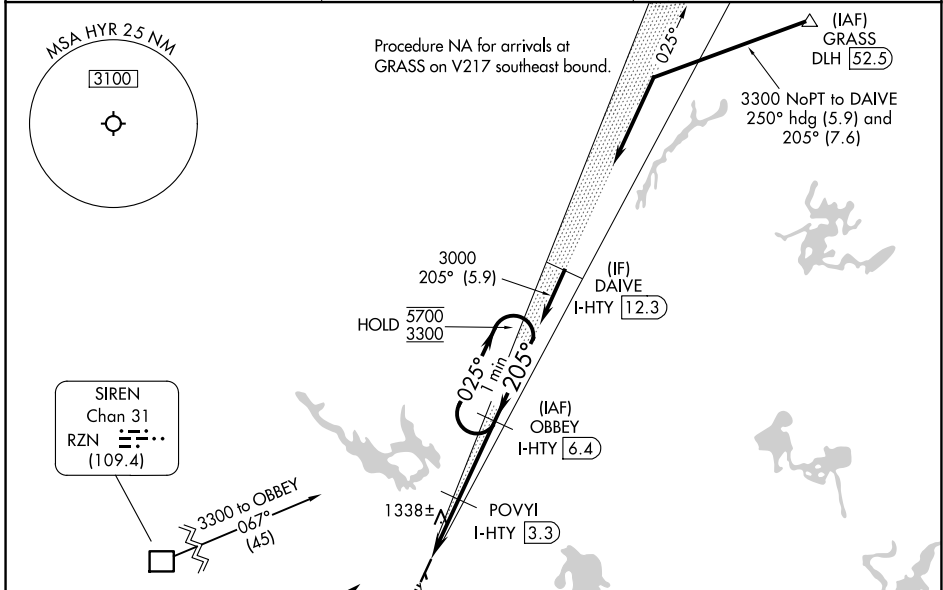
LOC/DME I-HTY 108.5 Chan 22	APP CRS 205°	Rwy Ldg TDZE 5003 1216 Apt Elev 1216
---	------------------------	---

ILS or LOC RWY 21

SAWYER COUNTY (HYR)

RNP APCH-GPS. From RZN DME. DME required.	MALSR 	MISSED APPROACH: Climb to 2200 then climbing right turn to 3300 on heading 060° and I-HTY northeast course to OBBEY/I-HTY 6.4 DME and hold, continue climb-in-hold to 3300.
<p>▼ Circling NA to Rwy 16 and 34. Rwy 21 helicopter visibility reduction below</p> <p>▲ NA $\frac{3}{4}$ SM NA. For inop ALS, increase S-ILS 21 all Cats visibility to $\frac{7}{8}$ SM; increase S-LOC 21 Cats A and B visibility to 1 SM, and Cats C and D visibility to $1\frac{1}{8}$ SM.</p>		

ASOS 118.4	MINNEAPOLIS CENTER 126.45 276.4	UNICOM 122.8 (CTAF)
----------------------	---	-------------------------------



CATEGORY	A	B	C	D
S-ILS 21		1518- $\frac{3}{4}$	302 (400- $\frac{3}{4}$)	
S-LOC 21		1600- $\frac{3}{4}$	384 (400- $\frac{3}{4}$)	
CIRCLING	1860-1 644 (700-1)	2060-1 $\frac{1}{4}$ 844 (900-1 $\frac{1}{4}$)	2120-2 $\frac{3}{4}$ 904 (1000-2 $\frac{3}{4}$)	2120-3 904 (1000-3)

EC-3, 16 APR 2026 to 14 MAY 2026

EC-3, 16 APR 2026 to 14 MAY 2026