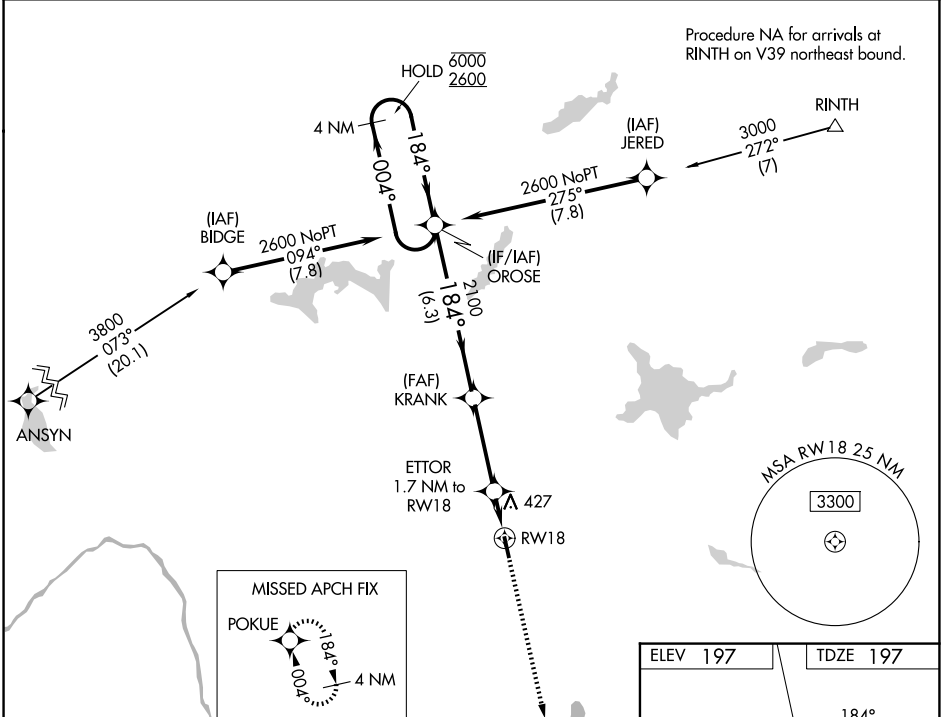


WAAS CH 53342 W18A	APP CRS 184°	Rwy Ldg TDZE 197 Apt Elev 197	4003
--	------------------------	---	-------------

RNAV (GPS) RWY 18

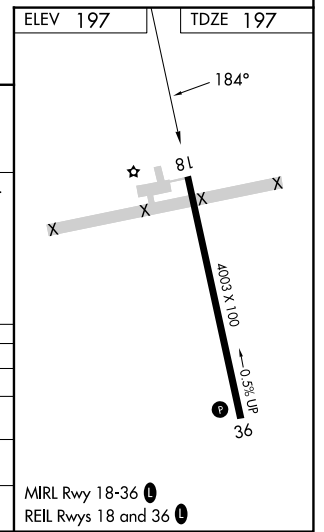
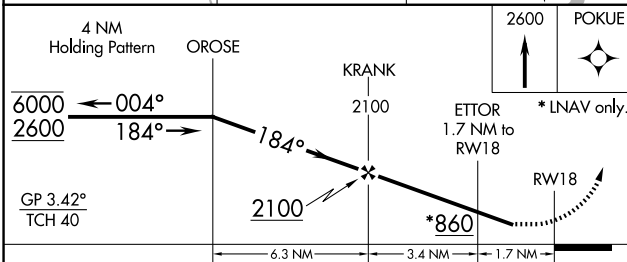
PITTSFIELD MUNI (2B7)

RNP APCH.		MISSED APPROACH: Climb to 2600 direct POKUE and hold.
V NA	Rwy 18 helicopter visibility reduction below 3/4 SM NA. Baro-VNAV NA. Use Bangor altimeter setting; when not received procedure NA.	
BGR ASOS 127.75	BANGOR APP CON 118.925 239.3	UNICOM 122.8 (CTAF) 0



NE-1, 16 APR 2026 to 14 MAY 2026

NE-1, 16 APR 2026 to 14 MAY 2026



4 NM Holding Pattern	OROSE	KRANK	ETTOR 1.7 NM to RW18	POKUE
6000 2600	← 004°	184° →	2100	2600
GP 3.42° TCH 40		184°	*860	*LNAV only.
	6.3 NM	3.4 NM	1.7 NM	
CATEGORY	A	B	C	D
LPV DA	610-1 1/8	413 (500-1 1/8)		NA
LNAV/VNAV DA	785-1 3/4	588 (600-1 3/4)		NA
LNAV MDA	740-1	543 (600-1)	740-1 5/8 543 (600-1 5/8)	NA
CIRCLING	800-1	603 (700-1)	880-2 683 (700-2)	NA