

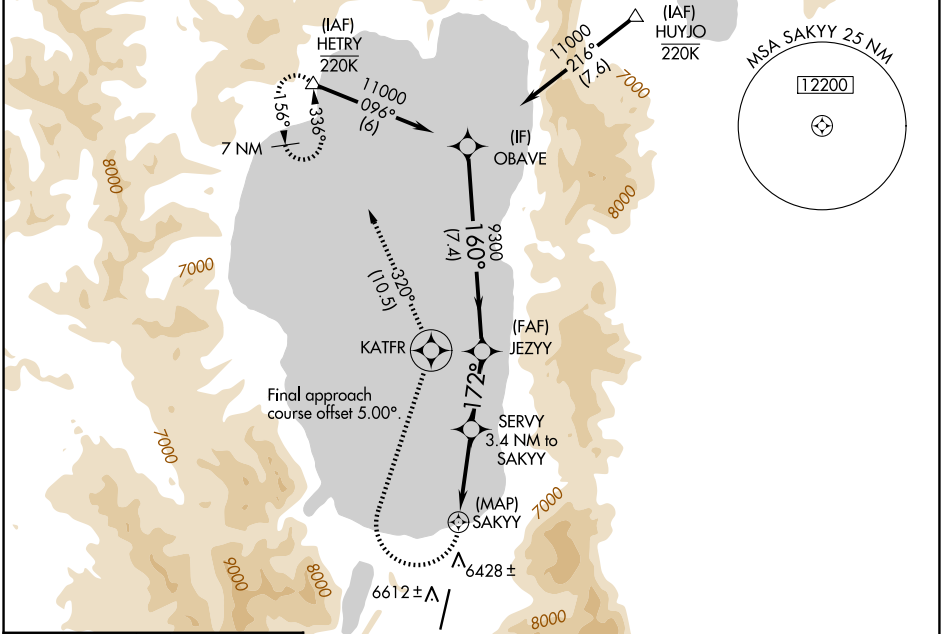
WAAS CH <b>57943</b> <b>W18A</b>	APP CRS <b>172°</b>	Rwy Ldg TDZE Apt Elev	<b>7017</b> <b>6259</b> <b>6268</b>
--	------------------------	-----------------------------	---

# RNAV (GPS) RWY 18

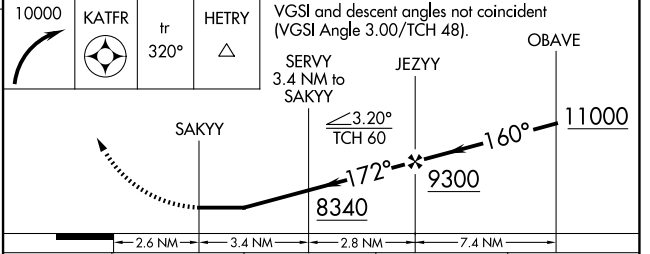
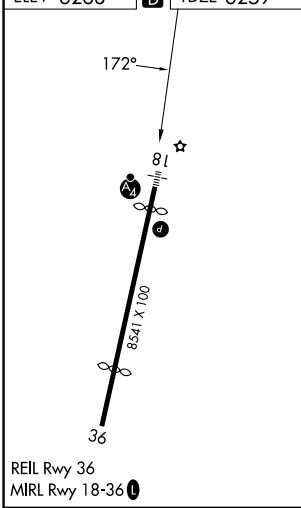
LAKE TAHOE (TVL)

RNP APCH.	MALSF	MISSED APPROACH: (Do not exceed 185K until KATFR). Climbing right turn to 10000 direct KATFR then on track 320° to HETRY and hold, continue climb-in-hold to 12000. * Missed approach requires minimum climb of 425 feet per NM to 10000.
<p>▼ Circling NA at night. Rwy 18 helicopter visibility reduction below ¾ SM NA. When local altimeter setting not received, -1.2°C procedure NA. Circling NA east of Rwy 18-36.</p>		

ASOS <b>124.725</b>	OAKLAND CENTER <b>127.95 316.1</b>	CTAF <b>122.85</b>
------------------------	---------------------------------------	-----------------------



ELEV 6268	<b>D</b>	TDZE 6259
-----------	----------	-----------



CATEGORY	A	B	C	D
LP MDA*	6680-3 421 (500-3)			
LP MDA	7120-3	861 (900-3)	7140-3 881 (900-3)	7320-3 1061 (1100-3)
LNAV MDA*	6980-3 721 (800-3)			
LNAV MDA	7280-3 1021 (1100-3)	7620-3 1361 (1400-3)	8160-3 1901 (1900-3)	NA
CIRCLING	7420-3 1152 (1200-3)	7680-3 1412 (1500-3)	8160-3 1892 (1900-3)	NA

SW-2, 16 APR 2026 to 14 MAY 2026

SW-2, 16 APR 2026 to 14 MAY 2026