

WAAS CH <b>53625</b> <b>W35A</b>	APP CRS <b>347°</b>	Rwy Idg <b>5000</b> TDZE <b>1261</b> Apt Elev <b>1261</b>
----------------------------------------	------------------------	-----------------------------------------------------------------

# RNAV (GPS) RWY 35

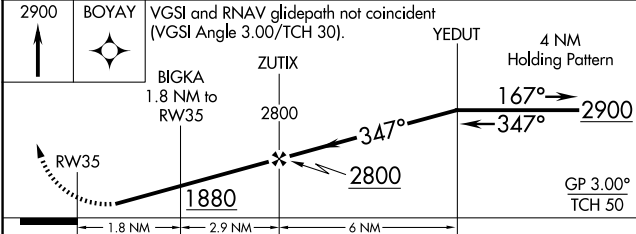
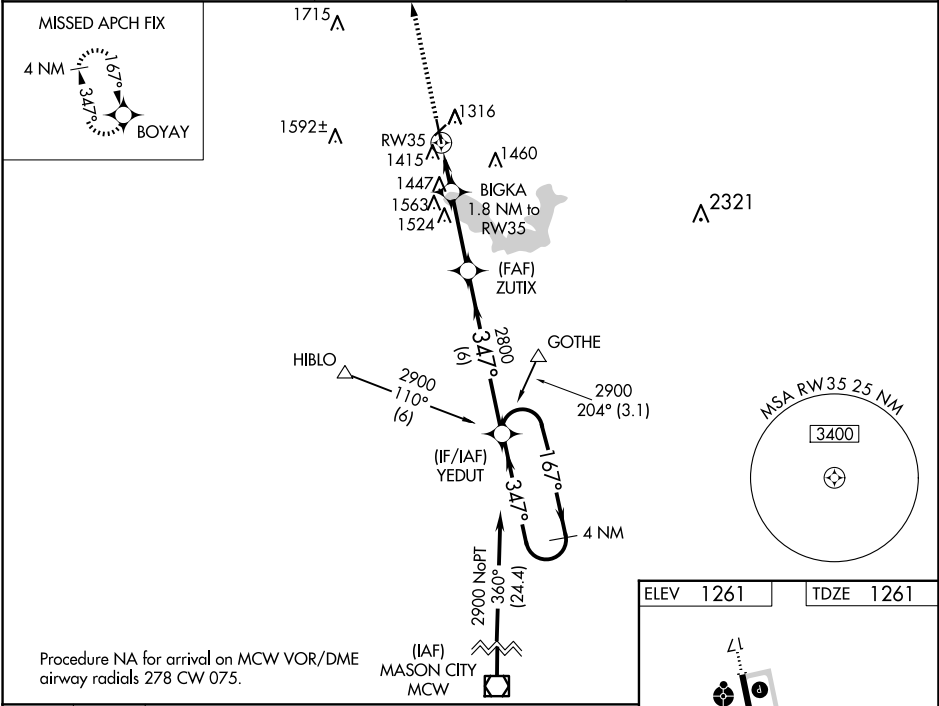
ALBERT LEA MUNI (A.E.L.)

RNP APCH-GPS.

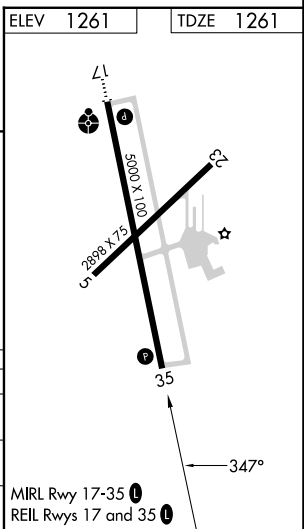
**⚠** Baro-VNAV NA when using Austin altimeter setting. For uncompensated Baro-VNAV systems, LNAV/VNAV NA below -28°C or above 36°C. Rwy 35 helicopter visibility reduction below 3/4 SM NA. When local altimeter setting not received, use Austin altimeter setting: increase LPV DA to 1559 feet and LNAV/VNAV DA to 1624 feet; increase all MDAs 60 feet.

MISSED APPROACH: Climb to 2900 direct BOYAY and hold.

AWOS-3PT <b>119.575</b>	ROCHESTER APP CON * <b>119.8 251.125</b>	UNICOM <b>123.0 (CTAF)</b>
----------------------------	---------------------------------------------	-------------------------------



CATEGORY	A	B	C	D
LPV DA	1511-1		250 (300-1)	
LNAV/VNAV DA	1576-1		315 (400-1)	
LNAV MDA	1720-1 459 (500-1)		1720-1 3/8 459 (500-1 3/8)	



NC-1, 16 APR 2026 to 14 MAY 2026

NC-1, 16 APR 2026 to 14 MAY 2026