

VOR/DME AEL	APP CRS	Rwy Idg	5000
109.8	173°	TDZE	1260
Chan 35		Apt Elev	1261

VOR RWY 17

ALBERT LEA MUNI (AEL)

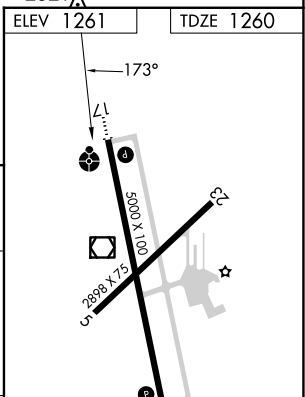
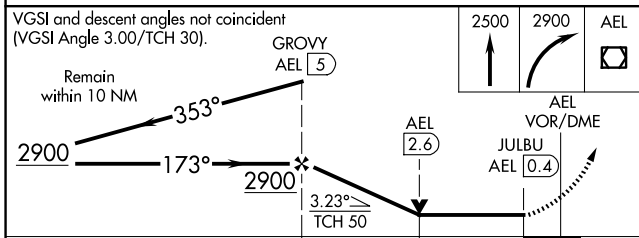
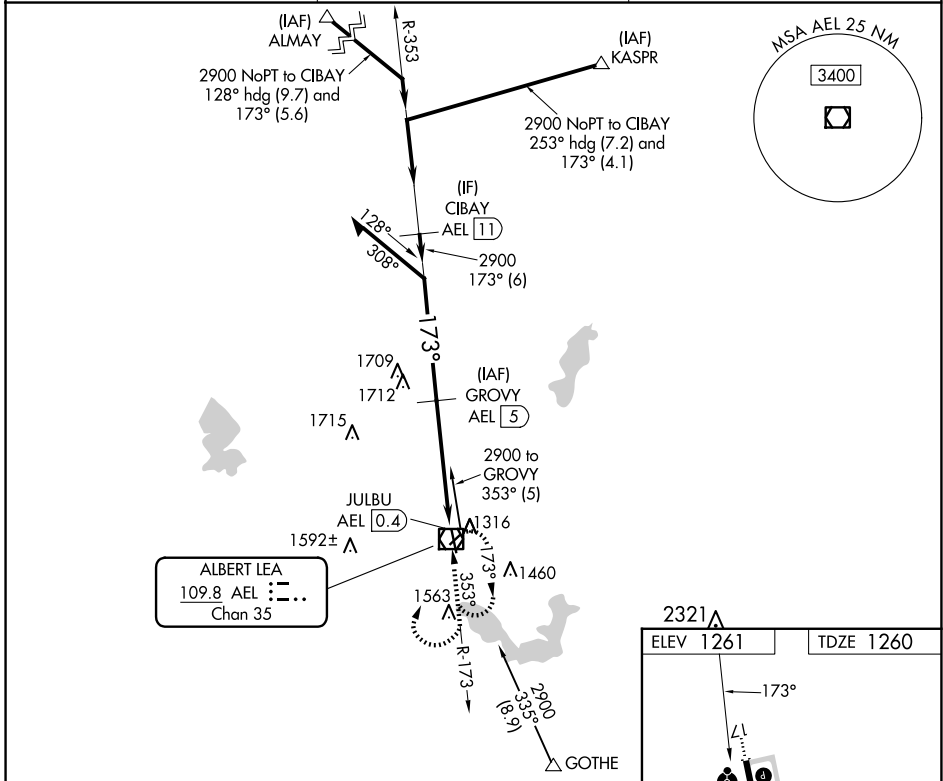
DME required.

⚠ Circling Rwy 5, 23 NA at night. Rwy 17 helicopter visibility reduction below 3/4 SM NA. When local altimeter setting not received, use Austin altimeter setting: increase all MDA 60 feet; increase S-17 Cat C/D visibility 1/2 SM and Circling Cat A/C/D visibility 1/4 SM.

ODALS

MISSED APPROACH: Climb to 2500 then climbing right turn to 2900 direct AEL VOR/DME and hold.

AWOS-3PT 119.575	ROCHESTER APP CON ★ 119.8 251.125	UNICOM 123.0 (CTAF) 0
----------------------------	---	---------------------------------



CATEGORY	A	B	C	D
S-17	2020-1	760 (800-1)	2020-2	760 (800-2)
CIRCLING	2020-1 759 (800-1)	2020-1 1/4 759 (800-1 1/4)	2020-2 1/4 759 (800-2 1/4)	2040-2 1/2 779 (800-2 1/2)

MRL Rwy 17-35 0

REL Rws 17 and 35 0

NC-1, 16 APR 2026 to 14 MAY 2026

NC-1, 16 APR 2026 to 14 MAY 2026