

WAAS CH <b>97513</b> <b>W25A</b>	APP CRS <b>250°</b>	Rwy Ldg TDZE <b>1305</b> Apt Elev <b>1307</b>
--	------------------------	---

# RNAV (GPS) RWY 25

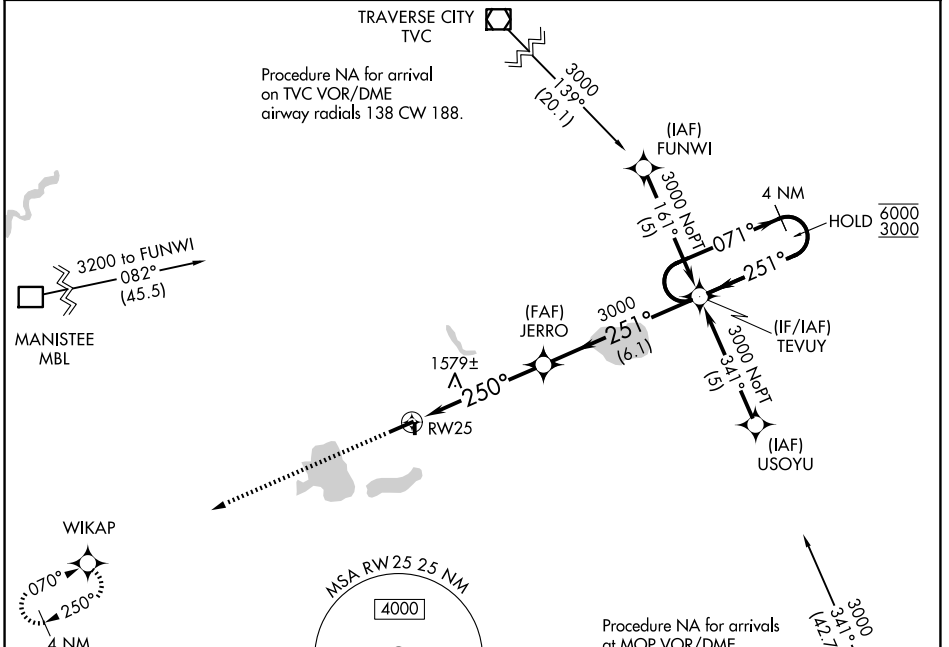
WEXFORD COUNTY (CAD)

RNP APCH - GPS.

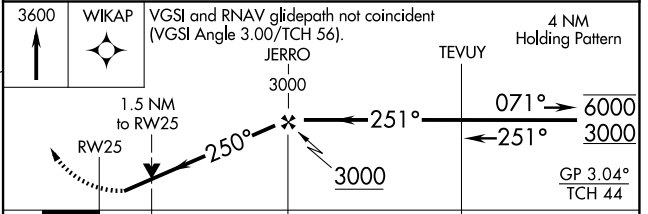
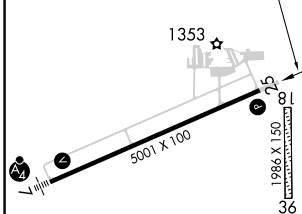
**▼** Circling NA to Rwy 18 and 36. Rwy 25 helicopter visibility reduction below ¼ SM NA.  
**▲** For uncompensated Baro-VNAV systems, LNAV/VNAV NA below -24°C or above 54°C.

**MISSED APPROACH:** Climb to 3600 direct WIKAP and hold.

AWOS-3P <b>128.325</b>	MINNEAPOLIS CENTER <b>132.9 338.3</b>	UNICOM <b>122.8 (CTAF) 0</b>
---------------------------	--	---------------------------------



ELEV <b>1307</b>	TDZE <b>1305</b>
------------------	------------------



CATEGORY	A	B	C	D
LPV DA		1625-7/8	320 (400-7/8)	
LNAV/VNAV DA		1869-15/8	564 (600-15/8)	
LNAV MDA	1840-1	535 (600-1)	1840-1½	535 (600-1½)
CIRCLING	1840-1	533 (600-1)	2040-2 733 (800-2)	2060-2½ 753 (800-2½)

HIRL Rwy 7-25 **0**  
 REL Rwy 7 and 25 **0**

EC-1, 16 APR 2026 to 14 MAY 2026

EC-1, 16 APR 2026 to 14 MAY 2026