


WAAS CH 86627 W30A	APP CRS 302°	Rwy Ldg TDZE Apt Elev	5500 1145 1145
--	------------------------	-----------------------------	---

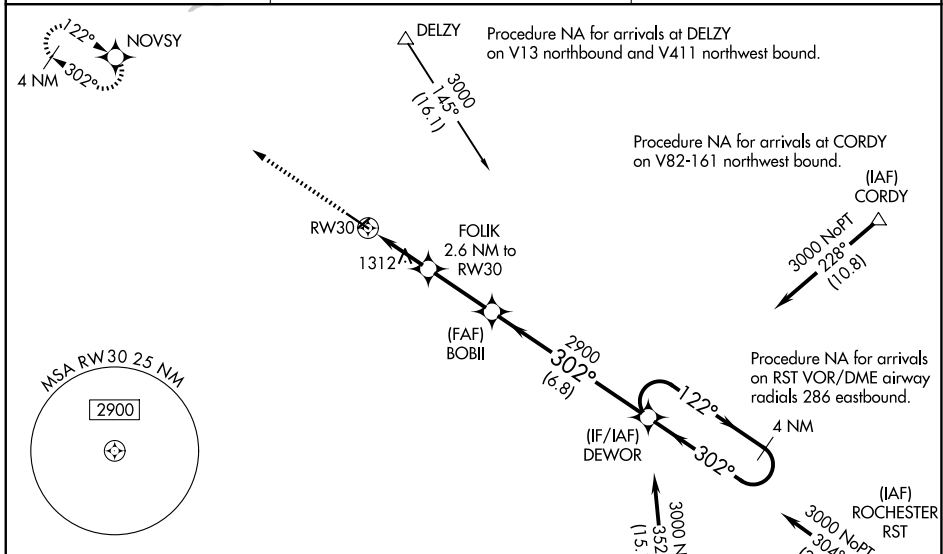
RNAV (GPS) RWY 30

OWATONNA DEGNER RGNL (OWA)

⚠ For uncompensated Baro-VNAV systems, LNAV/VNAV NA below -17°C (2°F) or above 54°C (130°F). DME/DME/RNP-0.3 NA. When local altimeter setting not received, use Fairbault altimeter setting and increase all DA 41 feet and all MDA 60 feet. Increase LNAV/VNAV all Cats visibility to 1½ mile, increase LNAV Cats C/D visibility to 1 mile, Cat C Circling visibility to 1¾ mile and Cat D visibility to 2½ mile. VDP and Baro-VNAV NA when using Fairbault altimeter setting. For inop MALSRL, when using Fairbault altimeter setting, increase LNAV/VNAV all Cats visibility to 1½ mile, LNAV Cats C/D visibility to 1¾ mile.

MALSRL
 MISSED APPROACH:
 Climb to 2800 direct
 NOVSY and hold.

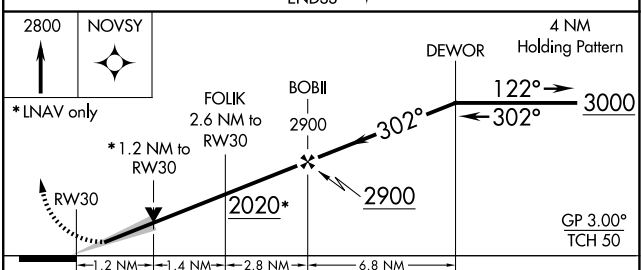
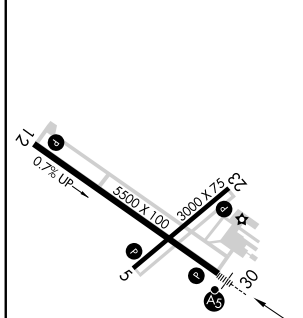
AWOS-3 128.325	ROCHESTER APP CON ★ 119.8 251.125	UNICOM 122.7 (CTAF) 0
--------------------------	---	---------------------------------



NC-1, 16 APR 2026 to 14 MAY 2026

NC-1, 16 APR 2026 to 14 MAY 2026

ELEV 1145	TDZE 1145
-----------	-----------



CATEGORY	A	B	C	D
LPV DA	1345-½		200 (200-½)	
LNAV/VNAV DA	1567-1		422 (500-1)	
LNAV MDA	1580-½	435 (500-½)	1580-¾	435 (500-¾)
CIRCLING	1640-1 495 (500-1)	1700-1 555 (600-1)	1720-1½ 575 (600-1½)	1880-2¼ 735 (800-2¼)

MIRL Rwy 5-23
 REIL Rwy 5, 12 and 23
 HIRL Rwy 12-30