

WAAS CH 97321 W01A	APP CRS 010°	Rwy Ldg TDZE Apt Elev	5101 626 638
--	------------------------	-----------------------------	---

RNAV (GPS) RWY 1L

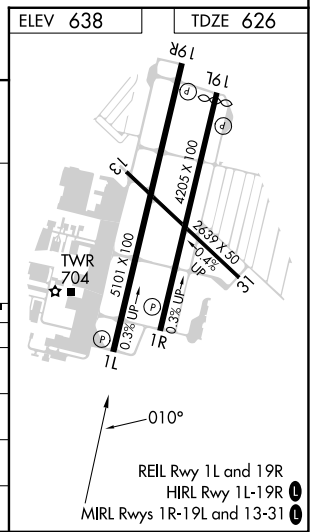
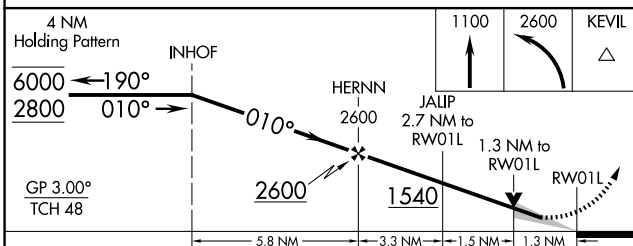
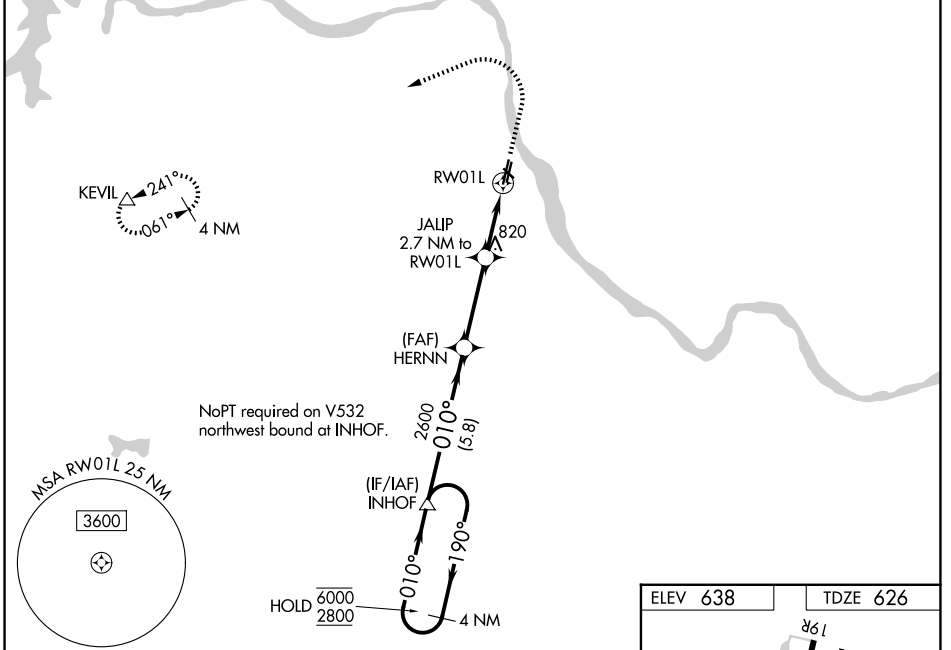
TULSA RIVERSIDE (RVS)

RNP APCH - GPS.

⚠ Circling NA northeast of Rwy 31 and 19L. For uncompensated Baro-VNAV systems, LNAV/VNAV NA below -16°C or above 54°C. Baro-VNAV and VDP NA when using TUL altimeter setting. When local altimeter setting not received, use TUL altimeter setting: increase LPV DA to 871 feet; increase LNAV/VNAV DA to 1152 feet and all visibilities 1/8 SM. Increase all MDAs 40 feet and Circling visibility Cat C 1/4 SM.

⚠ MISSED APPROACH: Climb to 1100 then climbing left turn to 2600 direct KEVIL and hold.

ATIS 126.5	TULSA APP CON 134.7	RIVERSIDE TOWER ★ 120.3 (CTAF) 0	GND CON 121.7	UNICOM 122.95
----------------------	-------------------------------	---	-------------------------	-------------------------



CATEGORY	A	B	C	D
LPV DA	845-3/4		219 (300-3/4)	
LNAV/VNAV DA	1126-13/8		500 (500-13/8)	
LNAV MDA	1080-1	454 (500-1)	1080-13/8	454 (500-13/8)
CIRCLING	1260-1 622 (700-1)	1280-1 642 (700-1)	1280-13/4 642 (700-13/4)	1380-21/2 742 (800-21/2)

SC-1, 16 APR 2026 to 14 MAY 2026

SC-1, 16 APR 2026 to 14 MAY 2026