

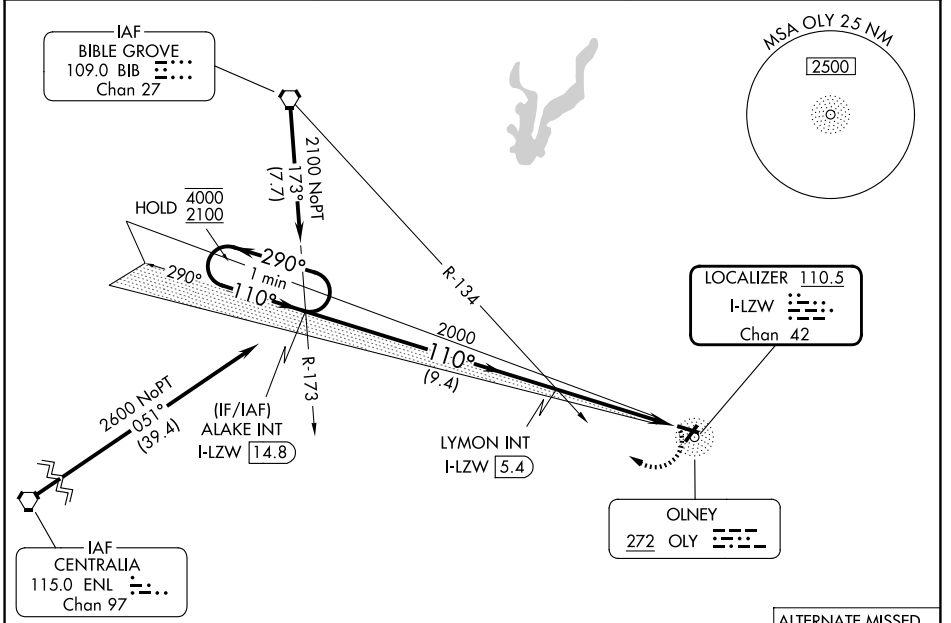
LOC/DME I-LZW 110.5 Chan 42	APP CRS 110°	Rwy Ldg TDZE Apt Elev 4099 482 482
---	------------------------	--

LOC RWY 11

OLNEY-NOBLE (OLY)

<p>AWOS-3 119.275</p>	<p>KANSAS CITY CENTER 124.3 269.15</p>	<p>UNICOM 123.0 (CTAF)</p>
---	--	--

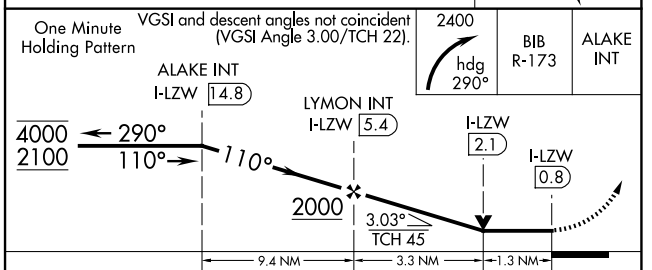
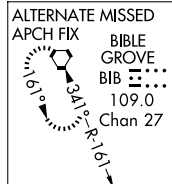
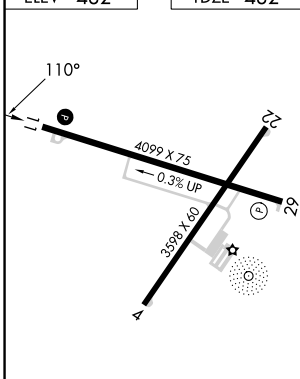
MISSED APPROACH: Climbing right turn to 2400 on heading 290° and BIB VORTAC R-173 to ALAKE INT/I-LZW LOC/DME 14.8 DME and hold.



EC-3, 16 APR 2026 to 14 MAY 2026

EC-3, 16 APR 2026 to 14 MAY 2026

ELEV 482	TDZE 482
----------	----------



FAF to MAP 4.6 NM					
Knots	60	90	120	150	180
Min:Sec	4:36	3:04	2:18	1:50	1:32

CATEGORY	A	B	C	D
S-11	920-1 438 (500-1)		920-1¼ 438 (500-1¼)	
CIRCLING	920-1 438 (500-1)	940-1 458 (500-1)	960-1½ 478 (500-1½)	1180-2¼ 698 (700-2¼)