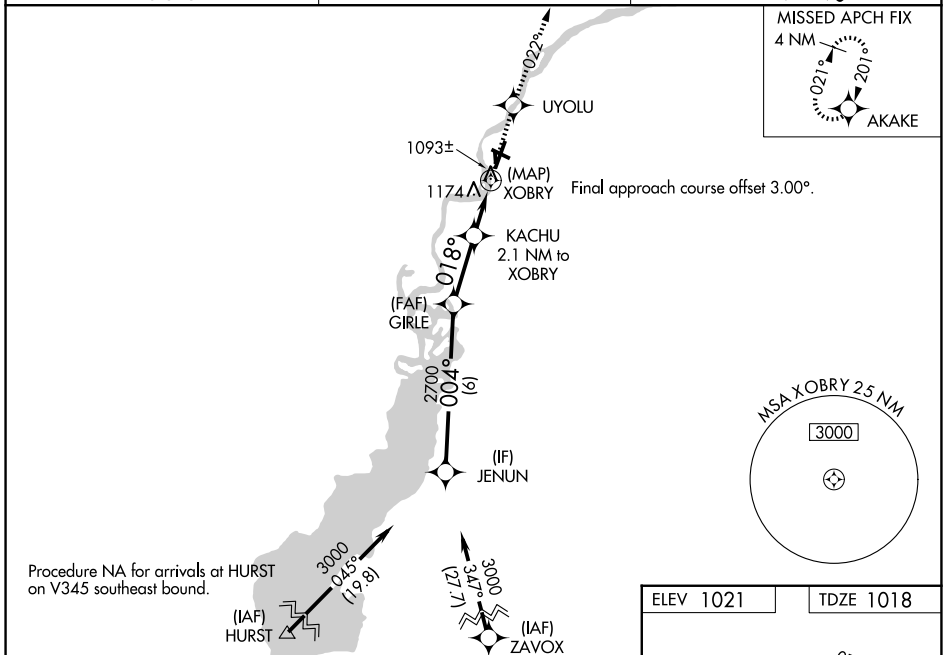


WAAS CH 77731 W02A	APP CRS 018°	Rwy Ldg TDZE Apt Elev 5500 1018 1021
--	------------------------	--

RNAV (GPS) RWY 2

ALEXANDER FLD SOUTH WOOD COUNTY (ISW)

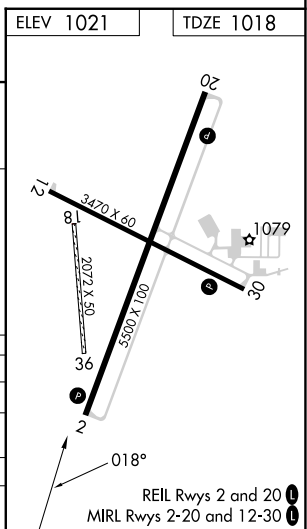
RNP APCH - GPS.		MISSED APPROACH: Climb to 3000 direct UYOLU and on track 022° to AKAKE and hold.
ASOS 126.575	MINNEAPOLIS CENTER 124.4 317.7	UNICOM 122.8 (CTAF) 0



Procedure NA for arrivals at HURST on V345 southeast bound.

GP 3.00° TCH 50

VGS1 and RNAV glidepath not coincident (VGS1 Angle 3.00/TCH 35).		3000	UYOLU	tr 022°	AKAKE
JENUN	GIRLE	KACHU	XOBRY		
3000	2700	1880			
6 NM		2.6 NM	1.4	0.7	0.5
CATEGORY	A	B	C	D	
LPV DA	1298-1		280 (300-1)		
LNAV/VNAV DA	1493-1 3/8		475 (500-1 3/8)		
LNAV MDA	1440-1	422 (500-1)	1440-1 1/4	422 (500-1 1/4)	
CIRCLING	1480-1 459 (500-1)	1560-1 539 (600-1)	1740-2 719 (800-2)	1800-2 1/2 779 (800-2 1/2)	



EC-3, 16 APR 2026 to 14 MAY 2026

EC-3, 16 APR 2026 to 14 MAY 2026