

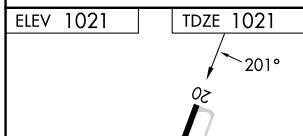
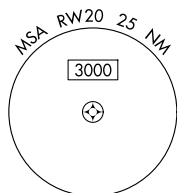
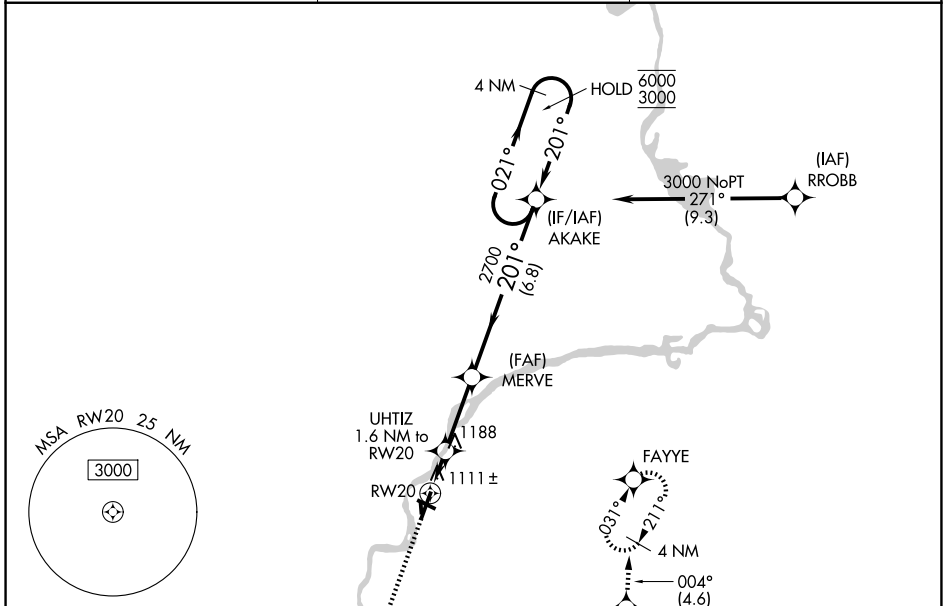
APP CRS	Rwy Ldg	<b>5500</b>
<b>201°</b>	TDZE	<b>1021</b>
	Apt Elev	<b>1021</b>

# RNAV (GPS) RWY 20

ALEXANDER FLD SOUTH WOOD COUNTY (ISW)

RNP APCH.	MISSED APPROACH: Climb to 3000 direct WEMUG and on track 117° to OCEDE and on track 049° to LHALL and on track 004° to FAYYE and hold.
<p>▼ Circling NA to Rwy 18 and 36.</p> <p>▲ Rwy 20 helicopter visibility reduction below 1 SM NA.</p> <p>▲ Straight-in Rwy 20 NA at night, Circling Rwy 20, 30 NA at night.</p>	

ASOS <b>126.575</b>	MINNEAPOLIS CENTER <b>124.4 317.7</b>	UNICOM <b>122.8 (CTAF)</b>
------------------------	--	-------------------------------



3000	WEMUG	tr 117°	OCEDE	tr 049°	LHALL	tr 004°	FAYYE	4 NM Holding Pattern
	UHTIZ 1.6 NM to RW20	≤3.50° TCH 42	MERVE	AKAKE				
	RW20	1640	2700	6000	3000			
	1.6 NM	2.8 NM	6.8 NM					
CATEGORY	A	B	C	D				
LNAV MDA	1380-1		359 (400-1)					
CIRCLING	1480-1 459 (500-1)	1560-1 539 (600-1)	1740-2 719 (800-2)	1800-2½ 779 (800-2½)				

EC-3, 16 APR 2026 to 14 MAY 2026

EC-3, 16 APR 2026 to 14 MAY 2026