

APP CRS 263°	Rwy Ldg 3779
	TDZE 632
	Apt Elev 634

RNAV (GPS) RWY 26

GRIFFITH-MERRILLVILLE (Ø5C)

RNP APCH

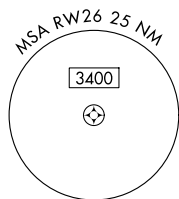
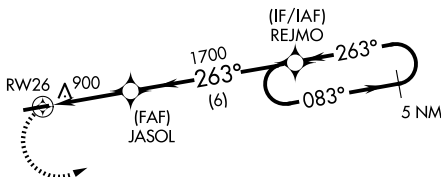
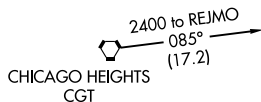
▼ Obtain local altimeter setting on CTAF; when not received use Chicago Midway
 ▲ NA Int'l altimeter setting and increase all MDAs 60 feet. Visibility reduction by
 helicopters NA. Procedure NA at night.

MISSED APPROACH: Climbing left
 turn to 2400 direct REJMO and hold.

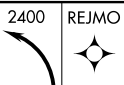
CHICAGO APP CON
133.1 285.6

UNICOM
123.0 (CTAF)

Procedure NA for arrival
 on CGT VORTAC
 via V8-92 westbound.

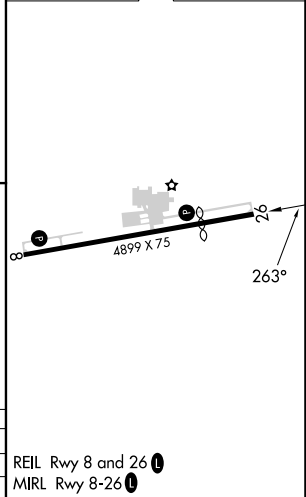
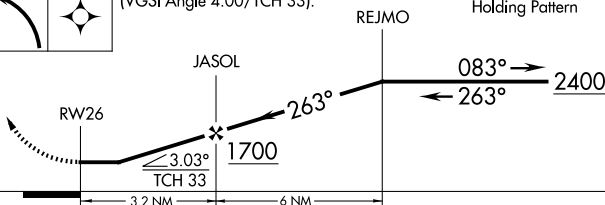


ELEV 634	TDZE 632
----------	----------



VGSI and descent angles not coincident
 (VGSI Angle 4.00/TCH 33).

5 NM
 Holding Pattern



CATEGORY	A	B	C	D
LNAV MDA	1160-1	528 (600-1)		NA
CIRCLING	1200-1	566 (600-1)		NA

REL Rwy 8 and 26
 MRL Rwy 8-26