

APP CRS	Rwy Ldg	4899
083°	TDZE	634
	Apt Elev	634

RNAV (GPS) RWY 8

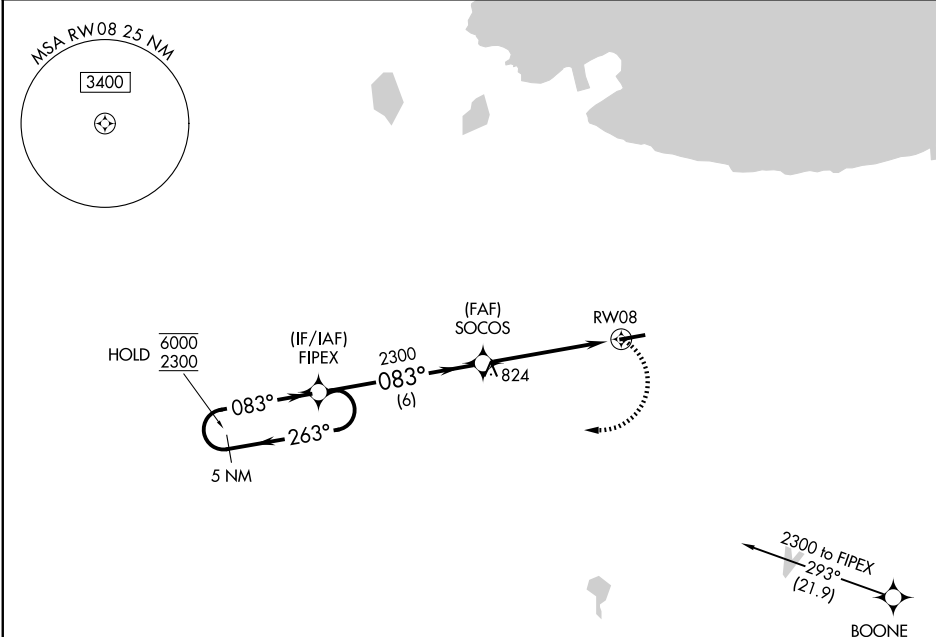
GRIFFITH-MERRILLVILLE (Ø5C)

RNP APCH - GPS.

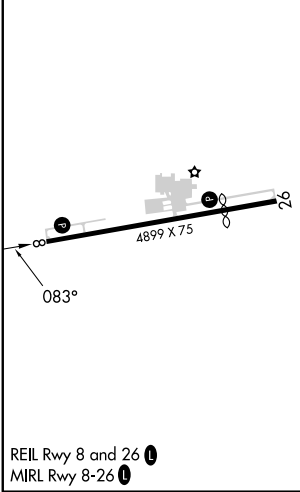
Procedure NA at night. Obtain local altimeter setting on CTAF; when not received, use Chicago Midway Intl altimeter setting and increase all MDAs 60 feet. Rwy 8 helicopter visibility reduction below 1 SM NA.

MISSED APPROACH: Climbing right turn to 2300 direct FIPEX and hold.

CHICAGO APP CON 133.1 285.6	UNICOM 123.0 (CTAF) 0
---------------------------------------	---------------------------------



ELEV 634	TDZE 634
----------	----------



5 NM Holding Pattern	VGSi and descent angles not coincident (VGSi Angle 3.50/TCH 44).		2300	FIPEX
	6000 2300	← 263° → 083°	2300	SOCCS
		6 NM	5 NM	RWY 8
			3.04° TCH 41	
CATEGORY	A	B	C	D
LNAY MDA	1080-1	446 (500-1)	NA	
CIRCLING	1200-1	566 (600-1)	NA	

EC-2, 16 APR 2026 to 14 MAY 2026

EC-2, 16 APR 2026 to 14 MAY 2026