

| | | |
|--|------------------------|---|
| VORTAC CGT 114.2 Chan 89 | APP CRS 084° | Rwy Ldg TDZE 634 Apt Elev 634 |
|--|------------------------|---|

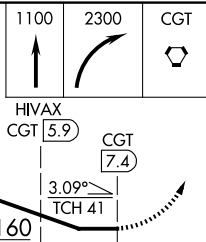
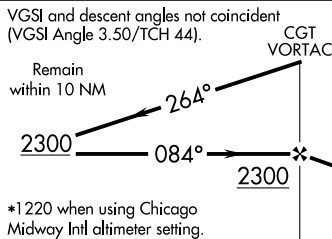
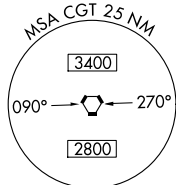
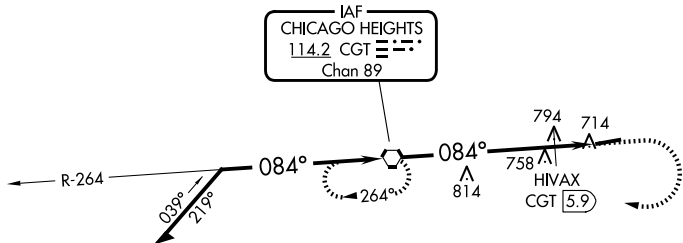
VOR RWY 8
GRIFFITH-MERRILLVILLE (05C)

NA Obtain local altimeter setting on CTAF; when not received, use Chicago Midway Intl altimeter setting and increase all MDAs 60 feet. Visibility reduction by helicopters NA. Procedure NA at night.

MISSED APPROACH: Climb to 1100 then climbing right turn to 2300 direct CGT VORTAC and hold.

CHICAGO APP CON
133.1 285.6

UNICOM
123.0 (CTAF) 0



| | |
|---------------------|--------------------------|
| ELEV 634 | TDZE 634 |
| | |
| REIL Rwy 8 and 26 0 | |
| MIRL Rwy 8-26 0 | |
| FAF to MAP 7.4 NM | |
| Knots | 60 90 120 150 180 |
| Min:Sec | 7:24 4:56 3:42 2:58 2:28 |

| CATEGORY | A | B | C | D |
|--------------------|--------|-------------|---|----|
| S-8 | 1160-1 | 526 (600-1) | | NA |
| CIRCLING | 1200-1 | 566 (600-1) | | NA |
| HIVAX FIX MINIMUMS | | | | |
| S-8 | 1060-1 | 426 (500-1) | | NA |
| CIRCLING | 1200-1 | 566 (600-1) | | NA |

EC-2, 16 APR 2026 to 14 MAY 2026

EC-2, 16 APR 2026 to 14 MAY 2026