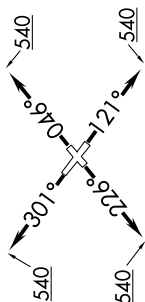


HOODO SEVEN DEPARTURE (RNAV)

SC-5, 16 APR 2026 to 14 MAY 2026

CINC DEL
125.6
CTAF
122.7
HOUSTON DEP CON
134.45 284.0



SCHOLES
VUH



*300
*1400
118°
(32)

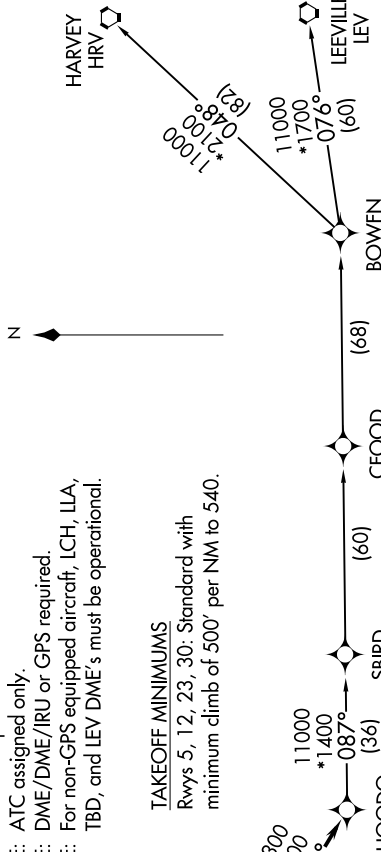
TAKEOFF MINIMUMS

Rwys 5, 12, 23, 30: Standard with minimum climb of 500' per NM to 540.

- NOTE: RNAV 1.
- NOTE: RADAR required.
- NOTE: ATC assigned only.
- NOTE: DME/DME/IRU or GPS required.
- NOTE: For non-GPS equipped aircraft, LCH, ILA, TBD, and LEV DME's must be operational.

TOP ALTITUDE: ASSIGNED BY ATC

N



NOTE: Chart not to scale.

DEPARTURE ROUTE DESCRIPTION

- TAKEOFF RUNWAY 5: Climb on heading 046° to 540, for RADAR vectors to VUH VOR/DME, thence
- TAKEOFF RUNWAY 12: Climb on heading 121° to 540, for RADAR vectors to VUH VOR/DME, thence
- TAKEOFF RUNWAY 23: Climb on heading 226° to 540, for RADAR vectors to VUH VOR/DME, thence
- TAKEOFF RUNWAY 30: Climb on heading 301° to 540, for RADAR vectors to VUH VOR/DME, thence

. . . . on track 118° to HOODO, then on (transition). Maintain ATC assigned altitude.
Expect filed altitude 10 minutes after departure.

- BOWFN TRANSITION (HOODO7.BOWFN)
- CFOOD TRANSITION (HOODO7.CFOOD)
- HARVEY TRANSITION (HOODO7.HRV)
- LEEVILLE TRANSITION (HOODO7.LEV)
- SBIRD TRANSITION (HOODO7.SBIRD)

SC-5, 16 APR 2026 to 14 MAY 2026