

KARRR SEVEN DEPARTURE (RNAV)
(KARRR7 .KARRR) 29DEC22

LA PORTE, TEXAS
LA PORTE MUNI (T11)

CTAF
122.7
CLNC DEL
125.6
HOUSTON DEP CON
134.45 284.0

RNAV-1 DME/DME/IRU or GPS.
RADAR required.

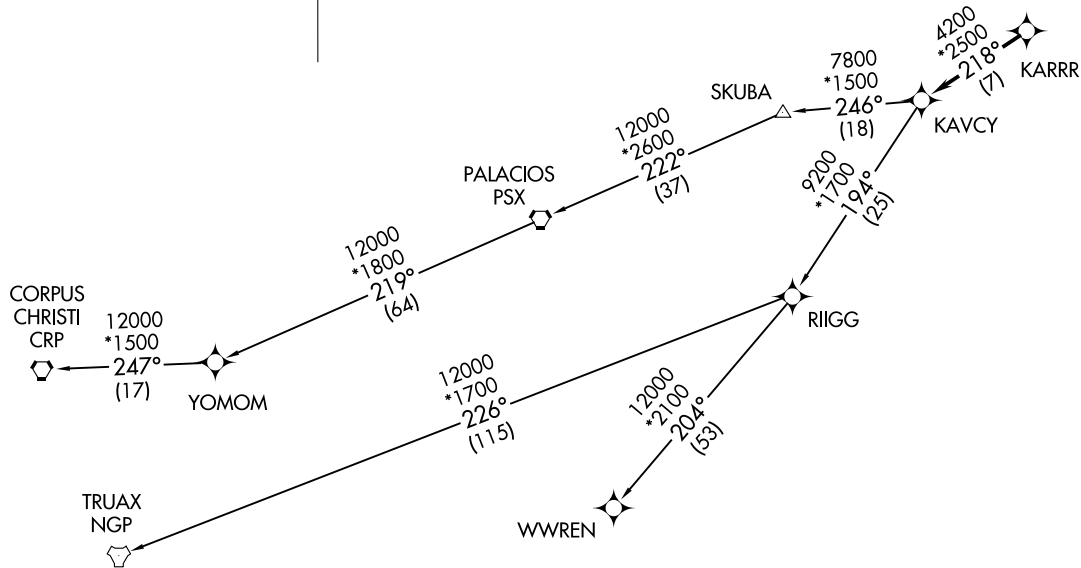
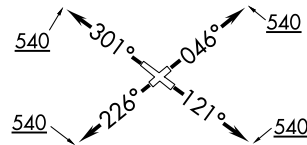
TOP ALTITUDE:
ASSIGNED BY ATC



TAKEOFF MINIMUMS

Rwys 5, 12, 23, 30:

Standard with minimum climb of 500' per NM to 540.



(NARRATIVE ON FOLLOWING PAGE)

NOTE: Chart not to scale.

(KARRR7 .KARRR) 22633
KARRR SEVEN DEPARTURE (RNAV)

AL-5433 (FAA)

LA PORTE, TEXAS
LA PORTE MUNI (T11)

KARRR SEVEN DEPARTURE (RNAV)



DEPARTURE ROUTE DESCRIPTION

TAKEOFF RUNWAY 5: Climb on heading 046° to 540, for RADAR vectors to KARRR, thence. . . .

TAKEOFF RUNWAY 12: Climb on heading 121° to 540, for RADAR vectors to KARRR, thence. . . .

TAKEOFF RUNWAY 23: Climb on heading 226° to 540, for RADAR vectors to KARRR, thence. . . .

TAKEOFF RUNWAY 30: Climb on heading 301° to 540, for RADAR vectors to KARRR, thence. . . .

. . . .on track 218° to KAVCY, then on (transition). Maintain ATC assigned altitude. Expect filed altitude 10 minutes after departure.

CORPUS CHRISTI TRANSITION (KARRR7.CRP)

PALACIOS TRANSITION (KARRR7.PSX)

TRUAX TRANSITION (KARRR7.NGP)

WWREN TRANSITION (KARRR7.WWREN)

YOMOM TRANSITION (KARRR7.YOMOM)

SC-5, 16 APR 2026 to 14 MAY 2026

SC-5, 16 APR 2026 to 14 MAY 2026