

WAAS CH <b>70703</b> <b>W27A</b>	APP CRS <b>273°</b>	Rwy Idg TDZE Apt Elev	<b>5001</b> <b>738</b> <b>738</b>
--	------------------------	-----------------------------	---

# RNAV (GPS) RWY 27

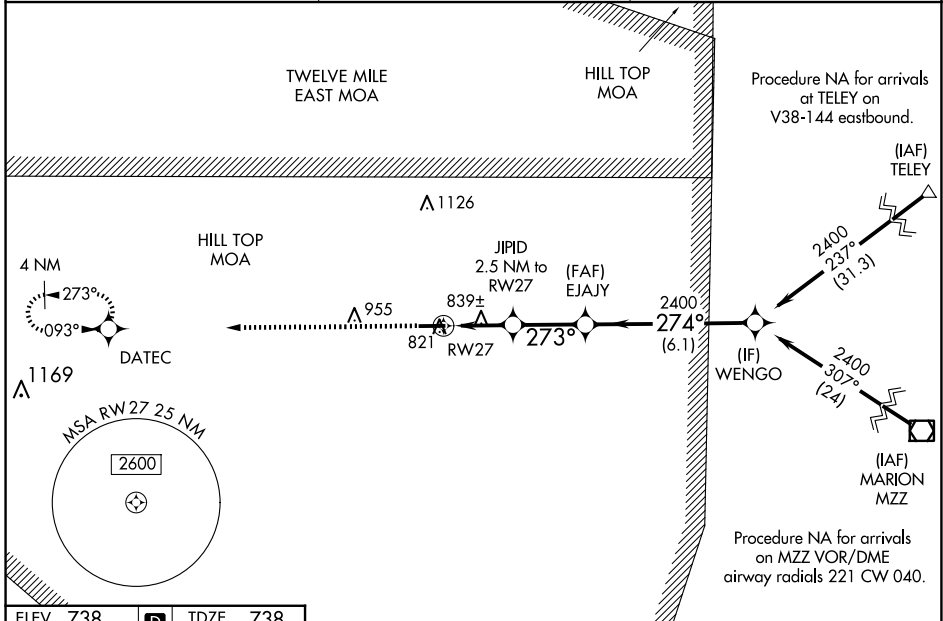
LOGANSPORT/CASS COUNTY (GGP)

**▽** Baro-VNAV NA when using Grissom ARB altimeter setting. For uncompensated Baro-VNAV systems, LNAV/VNAV NA below -16°C (4°F) or above 39°C (102°F). DME/DME RNP-0.3 NA.

**△ NA** VDP NA with Grissom ARB altimeter setting. When local altimeter setting not received, use Grissom ARB altimeter setting; increase LPV DA to 974 feet; increase LNAV/VNAV DA to 1056 feet and all visibilities ½ SM; increase all MDAs 40 feet and Circling visibility Cat D ½ SM.

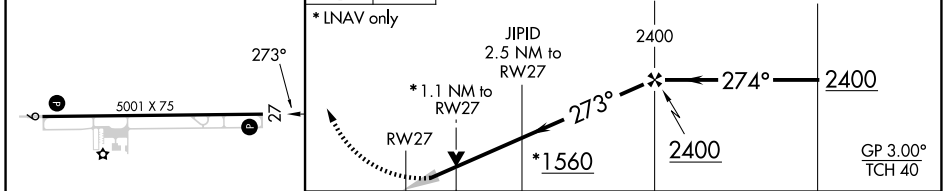
MISSED APPROACH: Climb to 2500 direct DATEC and hold.

AWOS-3P <b>118.5</b>	GRISSOM APP CON★ <b>121.05 338.275</b>	UNICOM <b>122.8 (CTAF) 0</b>
-------------------------	---	---------------------------------



ELEV <b>738</b>	<b>D</b>	TDZE <b>738</b>
-----------------	----------	-----------------

2500 DATEC VGSi and RNAV glidepath not coincident (VGSi Angle 3.00/TCH 25).



CATEGORY	A	B	C	D
LPV DA		938-¾	200 (200-¾)	
LNAV/VNAV DA		1020-⅞	282 (300-⅞)	
LNAV MDA	1100-1 362 (400-1)			
CIRCLING	1180-1 442 (500-1)	1200-1 462 (500-1)	1280-1½ 542 (600-1½)	1400-2 662 (700-2)

MIRL Rwy 9-27 **0**  
REIL Rwy 9 and 27 **0**

EC-2, 16 APR 2026 to 14 MAY 2026

EC-2, 16 APR 2026 to 14 MAY 2026