

WAAS CH <b>63014</b> <b>W29A</b>	APP CRS <b>290°</b>	Rwy Ldg TDZE Apt Elev	<b>5101</b> <b>1724</b> <b>1730</b>
--	------------------------	-----------------------------	---

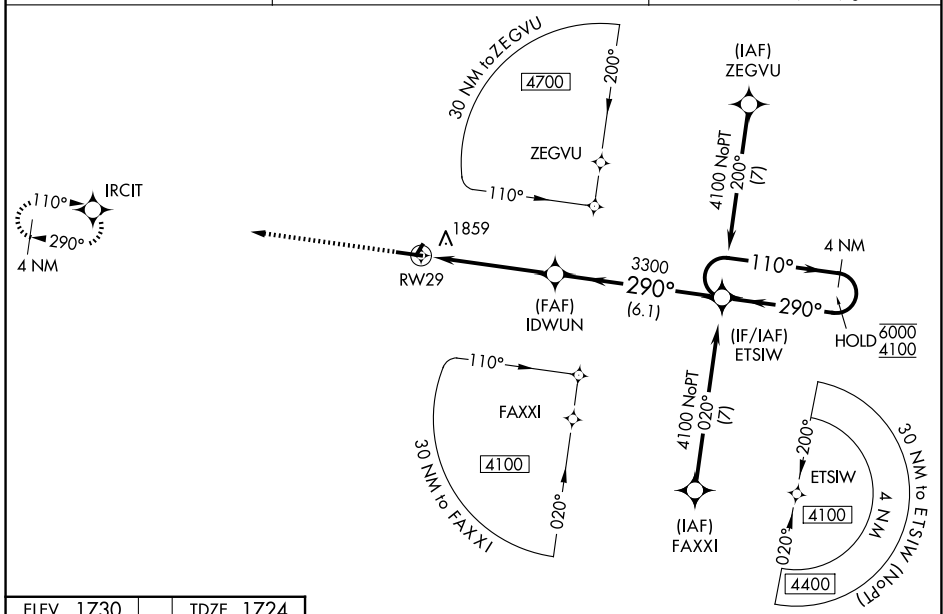
**RNAV (GPS) RWY 29**  
SCHUYLKILL COUNTY/JOE ZERBEY (Z.E.R.)

RNP APCH - GPS

**NA** Circling NA to Rws 4 and 22. Baro-VNAV NA when using Selinsgrove altimeter setting. For uncompensated Baro-VNAV systems, LNAV/VNAV NA below -18°C or above 54°C. VDP NA when using Selinsgrove altimeter setting. When local altimeter setting not received, use Selinsgrove altimeter setting: increase LPV DA to 2156 feet and visibility ½ SM; LNAV/VNAV DA to 2376 feet and visibility ¾ SM; increase all MDAs 240 feet and visibility LNAV Cats C/D ½ SM and Circling Cats C/D ½ SM.

**MISSED APPROACH:**  
Climb to 4000 direct IRCIT and hold.

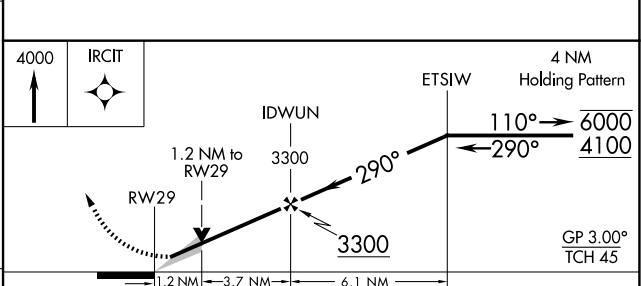
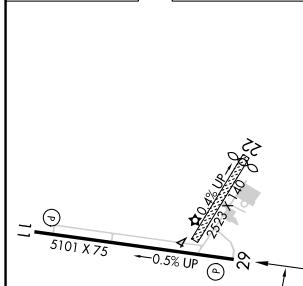
AWOS-3 <b>127.575</b>	HARRISBURG APP CON <b>118.25 269.45</b>	UNICOM <b>123.075 (CTAF)</b> <b>U</b>
--------------------------	--	--



NE-4, 16 APR 2026 to 14 MAY 2026

NE-4, 16 APR 2026 to 14 MAY 2026

ELEV 1730	TDZE 1724
-----------	-----------



CATEGORY	A	B	C	D
LPV DA		1924-¾	200 (200-¾)	
LNAV/VNAV DA		2144-1⅛	420 (500-1⅛)	
LNAV MDA	2120-1	396 (400-1)	2120-1⅛	396 (400-1⅛)
CIRCLING	2160-1 430 (500-1)	2180-1 450 (500-1)	2180-1½ 450 (500-1½)	2280-2 550 (600-2)

REIL Rws 11 and 29 **U**  
MIRL Rwy 11-29 **U**