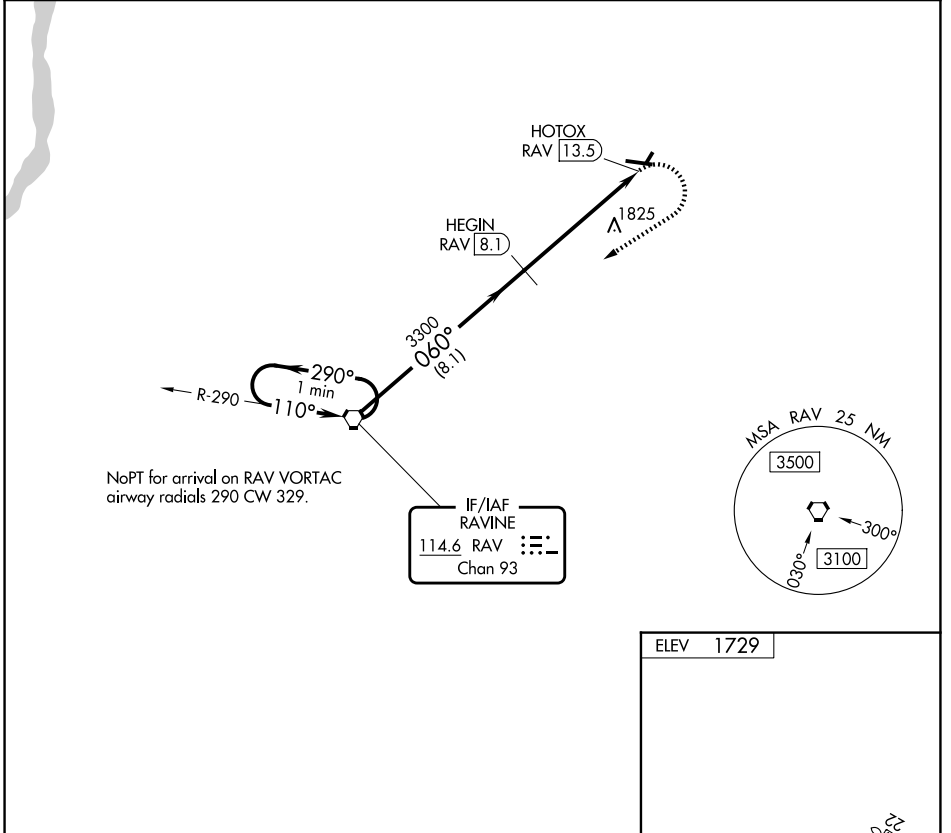


VORTAC RAV 114.6 Chan 93	APP CRS 060°	Rwy Ldg TDZE Apt Elev 1729	N/A N/A 1729
--	------------------------	--------------------------------------	---

VOR-A
SCHUYLKILL COUNTY/JOE ZERBEY (Z.F.R)

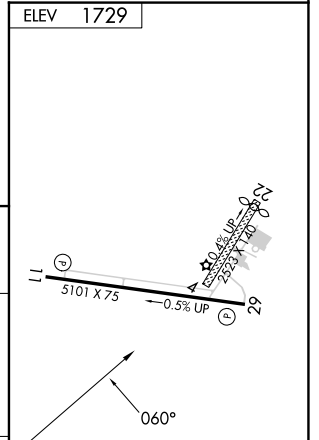
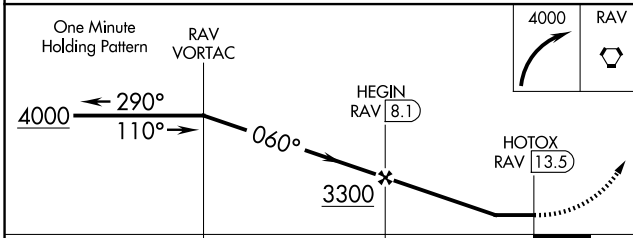
<p>NA Circling to Rwy 4, 22 NA at night. DME required. When local altimeter setting not received, use Penn Valley altimeter setting and increase all MDAs 280 feet and visibility Cat C and D ¾ SM.</p>	<p>MISSED APPROACH: Climbing right turn to 4000 direct RAV VORTAC and hold.</p>	
<p>AWOS-3 127.575</p>	<p>HARRISBURG APP CON 118.25 269.45</p>	<p>UNICOM 123.075 (CTAF) 0</p>



NoPT for arrival on RAV VORTAC airway radials 290 CW 329.

IF/IAF RAVINE
114.6 RAV
Chan 93

ELEV 1729



CATEGORY	A	B	C	D	
CIRCLING	2160-1 431 (500-1)	2180-1 451 (500-1)	2240-1½ 511 (600-1½)	2280-2 551 (600-2)	MIRL Rwy 11-29 0 REIL Rwys 11 and 29 0

NE-4, 16 APR 2026 to 14 MAY 2026

NE-4, 16 APR 2026 to 14 MAY 2026