

(MAREO5.MAREO) 23334  
**MAREO FIVE DEPARTURE**

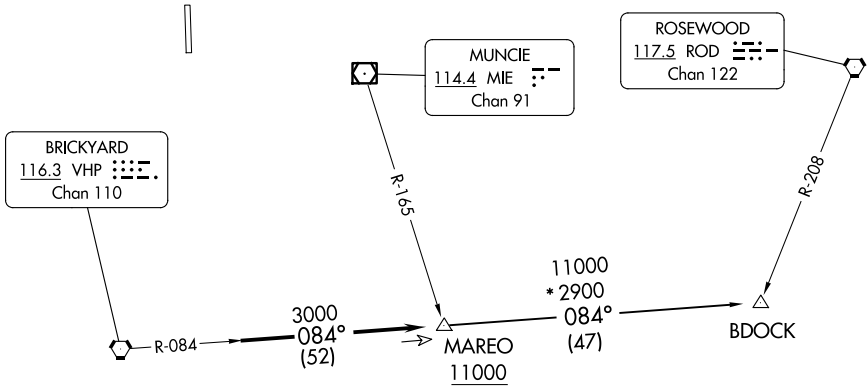
AL-5438 (FAA)

INDIANAPOLIS EXEC (TYQ)  
 INDIANAPOLIS, INDIANA

AWOS-3PT  
 120.725  
 INDIANAPOLIS DEP CON  
 124.65 127.15 317.8

**TOP ALTITUDE:  
 ASSIGNED BY ATC**

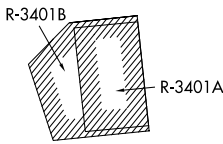
**TAKEOFF MINIMUMS**  
 Rwy 18, 36: Standard.



EC-2, 16 APR 2026 to 14 MAY 2026

EC-2, 16 APR 2026 to 14 MAY 2026

- NOTE: RADAR required.
- NOTE: Select appropriate localizer/DME frequency/channel prior to departure.
- NOTE: Turbojets accelerate to 250K until reaching 10000, if unable advise ATC.
- NOTE: Assigned to aircraft with a requested altitude of 11000 or above.



NOTE: Chart not to scale.

**DEPARTURE ROUTE DESCRIPTION**

**DEPARTING ALL OTHER AUTHORIZED RUNWAYS:** Climb on assigned heading to assigned altitude. Thence....

....expect RADAR vectors to join VHP R-084 to MAREO INT then via transition or assigned route. Expect clearance to requested altitude ten minutes after departure.

**BDOCK TRANSITION (MAREO5.BDOCK):** From over MAREO INT via VHP R-084 to BDOCK INT.

**MAREO FIVE DEPARTURE**  
 (MAREO5.MAREO) 01FEB18

INDIANAPOLIS, INDIANA  
 INDIANAPOLIS EXEC (TYQ)