

| | | | |
|---------------------------|------------------------|-----------------------------|---|
| LOC I-HYS 111.5 | APP CRS 339° | Rwy Ldg TDZE Apt Elev | 6501 1994 1999 |
|---------------------------|------------------------|-----------------------------|---|

ILS or LOC RWY 34

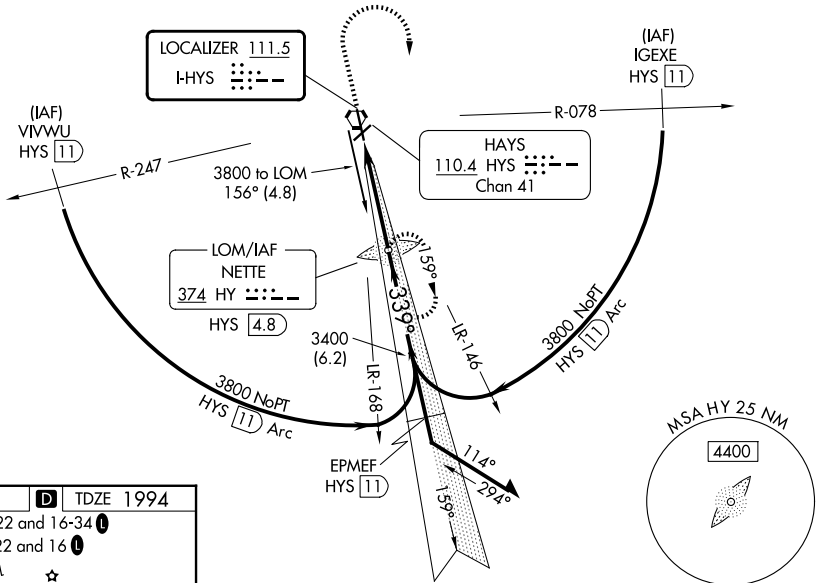
HAYS RGNL (HYS)

NA ADF required. Circling NA for Cat D northwest of Rwy 4 and west of Rwy 16. When local altimeter setting not received, use Russell altimeter setting: increase DA to 2263 feet; increase all MDA 80 feet and visibility S-LOC 34 Cat C and Circling Cat C and D ¼ SM. For inoperative MALSRS when using Russell altimeter setting, increase S-ILS all Cats visibility to 1.

MALSRS
MISSED APPROACH: Climb to 2600 then climbing right turn to 3800 direct NETTE LOM/HYS 4.8 DME and hold.

| | | |
|----------------------------|--|-------------------------------|
| AWOS-3PT 125.525 | KANSAS CITY CENTER 124.4 322.4 | UNICOM 122.8 (CTAF) |
|----------------------------|--|-------------------------------|

ADF or DME REQUIRED

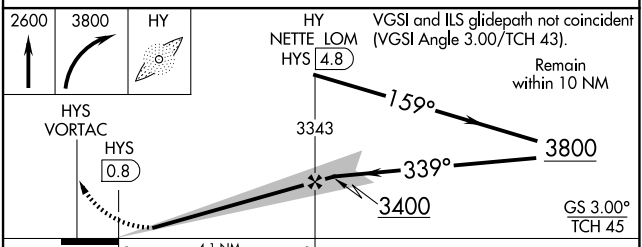
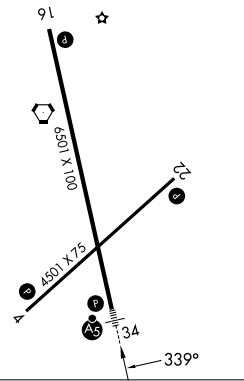


NC-2, 16 APR 2026 to 14 MAY 2026

NC-2, 16 APR 2026 to 14 MAY 2026

ELEV 1999 **D** TDZE 1994

MIRL Rws 4-22 and 16-34
REIL Rws 4, 22 and 16



| CATEGORY | A | B | C | D |
|----------|--------------------|---|--|---|
| S-ILS 34 | 2194-½ | | 200 (200-½) | |
| S-LOC 34 | 2340-½ | | 346 (400-½) 2340-¾ 346 (400-¾) | |
| CIRCLING | 2480-1 481 (500-1) | | 2560-1½ 561 (600-1½) 2680-2¼ 681 (700-2¼) | |

HAYS, KANSAS
Orig-F 27JAN22

38°51'N-99°16'W

ILS or LOC RWY 34

HAYS RGNL (HYS)