


WAAS CH 78319 W34A	APP CRS 339°	Rwy Ldg TDZE Apt Elev	6501 1994 1999
--	------------------------	-----------------------------	---

RNAV (GPS) RWY 34

HAYS RGNL (HYS)

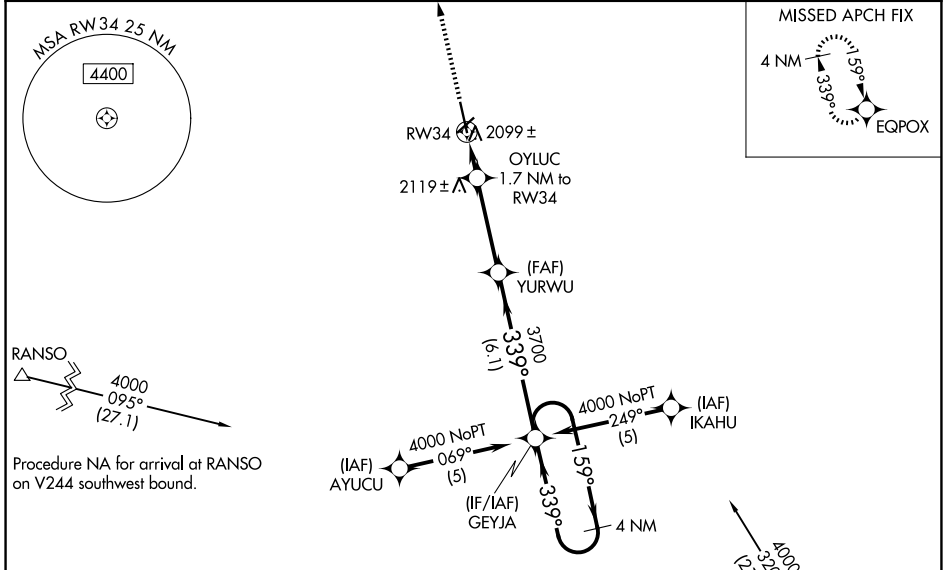
⚠ For uncompensated Baro-VNAV systems, LNAV/VNAV NA below -18°C (0°F) or above 45°C (113°F). DME/DME RNP-0.3 NA. When local altimeter setting not received, use Russell altimeter setting: increase LPV DA to 2263 feet; increase LNAV/VNAV DA to 2565 feet and visibility all Cats ¼ SM; increase all MDA 80 feet and visibility LNAV Cat C and Circling Cat C and D ¼ SM. Circling NA for Cat D northwest of Rwy 4 and west of Rwy 16. For inoperative MALSR when using Russell altimeter setting, increase LPV all Cats visibility to 1 mile. VDP and Baro-VNAV NA when using Russell altimeter setting.

MALSR

MISSED APPROACH:
Climb to 4000 direct EQPOX and hold.

AWOS-3PT
125.525

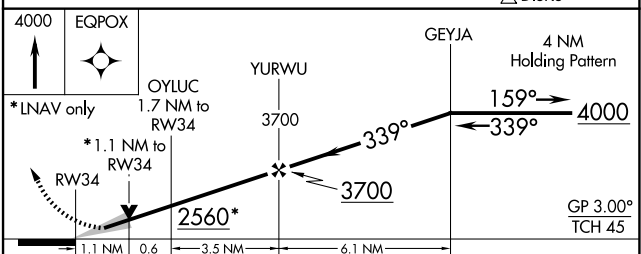
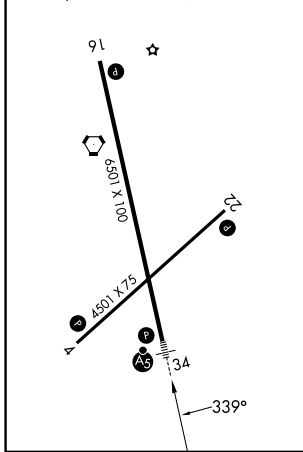
KANSAS CITY CENTER
124.4 322.4

UNICOM
122.8 (CTAF) 0



ELEV 1999 **D** TDZE 1994

MIRL Rws 4-22 and 16-34 **0**
REIL Rws 4, 22 and 16 **0**



CATEGORY	A	B	C	D
LPV DA	2194-½		200 (200-½)	
LNAV/VNAV DA	2496-1¼		502 (500-1¼)	
LNAV MDA	2380-½ 386 (400-½)		2380-1 386 (400-1)	
CIRCLING	2480-1 481 (500-1)		2560-1½ 561 (600-1½) 2680-2¼ 681 (700-2¼)	

NC-2, 16 APR 2026 to 14 MAY 2026

NC-2, 16 APR 2026 to 14 MAY 2026