

WAAS CH 90519 W04A	APP CRS 040°	Rwy Ldg TDZE Apt Elev	4500 1990 1999
---------------------------------	------------------------	-----------------------------	---

RNAV (GPS) RWY 4

HAYS RGNL (HYS)

RNP APCH - GPS.

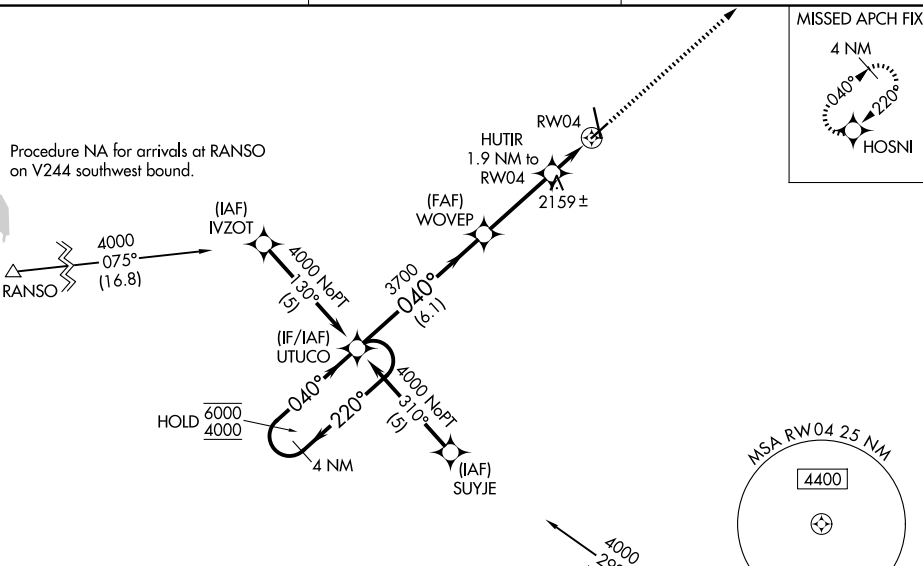
⚠ For uncompensated Baro-VNAV systems, LNAV/VNAV NA below -18°C or above 54°C. Baro-VNAV and VDP NA when using RSL altimeter setting. When local altimeter setting not received, use RSL altimeter setting; increase LPV DA to 2309 feet; increase LNAV/VNAV DA to 2459 feet and visibility all Cats ¼ SM; increase all MDA 80 feet and LNAV visibility Cat C/D ½ SM, and Circling visibility Cat C/D ¼ SM. Circling NA for Cat D northwest of Rwy 4 and west of Rwy 16.

MISSED APPROACH: Climb to 4000 direct HOSNI and hold.

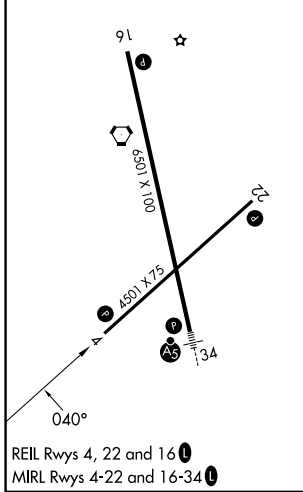
AWOS-3PT
125.525

KANSAS CITY CENTER
124.4 322.4

UNICOM
122.8 (CTAF) 0



ELEV 1999	D	TDZE 1990
-----------	----------	-----------



HAYS, KANSAS
Orig-B 20FEB25

4 NM Holding Pattern 6000 ← 220° 4000 → 040° GP 3.00° TCH 40	UTUCO		WOVEP		HUTIR 1.9 NM to RWY 4		4000	HOSNI
	6.1 NM		3.3 NM		0.7		1.2 NM	
CATEGORY	A	B	C	D				
LPV DA	2240-1		250 (300-1)					
LNAV/VNAV DA	2390-1½		400 (400-1½)					
LNAV MDA	2420-1	430 (500-1)	2420-1¼	430 (500-1¼)	2420-1½	430 (500-1½)		
CIRCLING	2480-1	481 (500-1)	2560-1½	561 (600-1½)	2680-2¼	681 (700-2¼)		

38°51'N-99°16'W

RNAV (GPS) RWY 4

HAYS RGNL (HYS)

NC-2, 16 APR 2026 to 14 MAY 2026

NC-2, 16 APR 2026 to 14 MAY 2026