

VORTAC HYS 110.4 Chan 41	APP CRS 170°	Rwy Ldg TDZE Apt Elev	6501 1999 1999
---------------------------------------	------------------------	-----------------------------	---

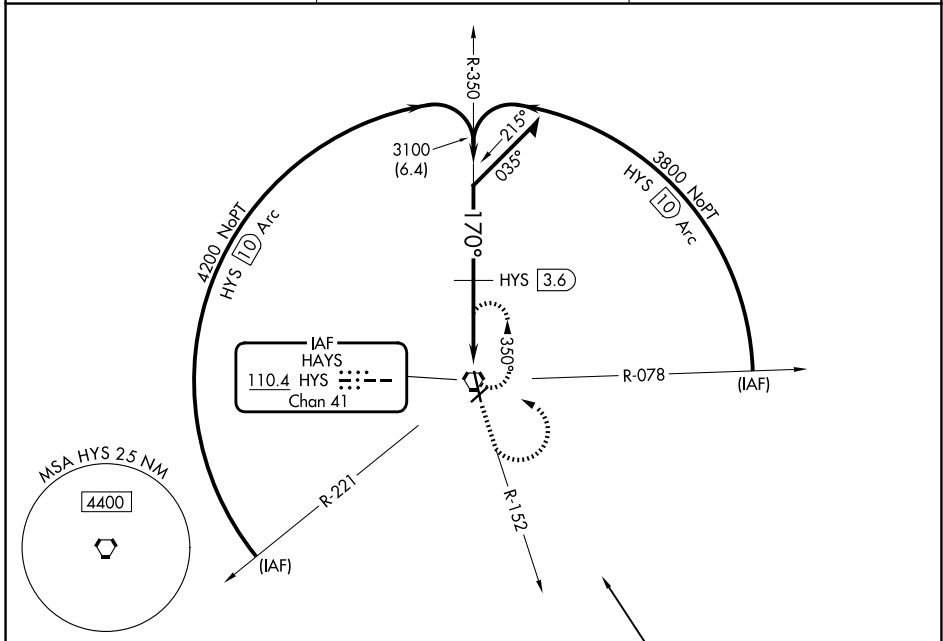
VOR/DME RWY 16

HAYS RGNL (HYS)

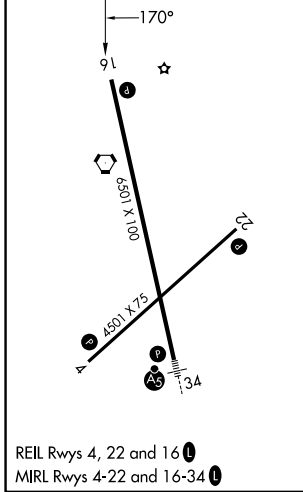
⚠ When local altimeter setting not received, use Russell altimeter setting: increase all MDA 80 feet and visibility Circling Cat C and D ¼ SM. Circling NA for Cat D northwest of Rwy 4 and west of Rwy 16. Visibility reduction by helicopters NA.

MISSED APPROACH: Climb to 3800 via HYS R-152 then climbing left turn to 3900 direct HYS VORTAC and hold.

AWOS-3PT 125.525	KANSAS CITY CENTER 124.4 322.4	UNICOM 122.8 (CTAF) 0
----------------------------	--	---------------------------------



ELEV 1999	D	TDZE 1999
-----------	----------	-----------



Remain within 10 NM HYS VORTAC 3900 3100 350° 170° 3.04° TCH 40 3.3 NM DISKS 3900 (34.9) 3170 (34.9)	3800 HYS R-152	3900 HYS	HYS														
	<table border="1"> <thead> <tr> <th>CATEGORY</th> <th>A</th> <th>B</th> <th>C</th> <th>D</th> </tr> </thead> <tbody> <tr> <td>S-16</td> <td>2520-1</td> <td>521 (600-1)</td> <td>2520-1½ 521 (600-1½)</td> <td>2520-1¾ 521 (600-1¾)</td> </tr> <tr> <td>CIRCLING</td> <td>2520-1</td> <td>521 (600-1)</td> <td>2560-1½ 561 (600-1½)</td> <td>2680-2¼ 681 (700-2¼)</td> </tr> </tbody> </table>			CATEGORY	A	B	C	D	S-16	2520-1	521 (600-1)	2520-1½ 521 (600-1½)	2520-1¾ 521 (600-1¾)	CIRCLING	2520-1	521 (600-1)	2560-1½ 561 (600-1½)
CATEGORY	A	B	C	D													
S-16	2520-1	521 (600-1)	2520-1½ 521 (600-1½)	2520-1¾ 521 (600-1¾)													
CIRCLING	2520-1	521 (600-1)	2560-1½ 561 (600-1½)	2680-2¼ 681 (700-2¼)													

HAYS, KANSAS
Amdt 3G 27JAN22

38°51'N-99°16'W

HAYS RGNL (HYS) VOR/DME RWY 16

NC-2, 16 APR 2026 to 14 MAY 2026

NC-2, 16 APR 2026 to 14 MAY 2026