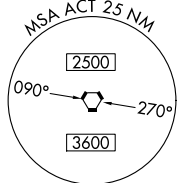
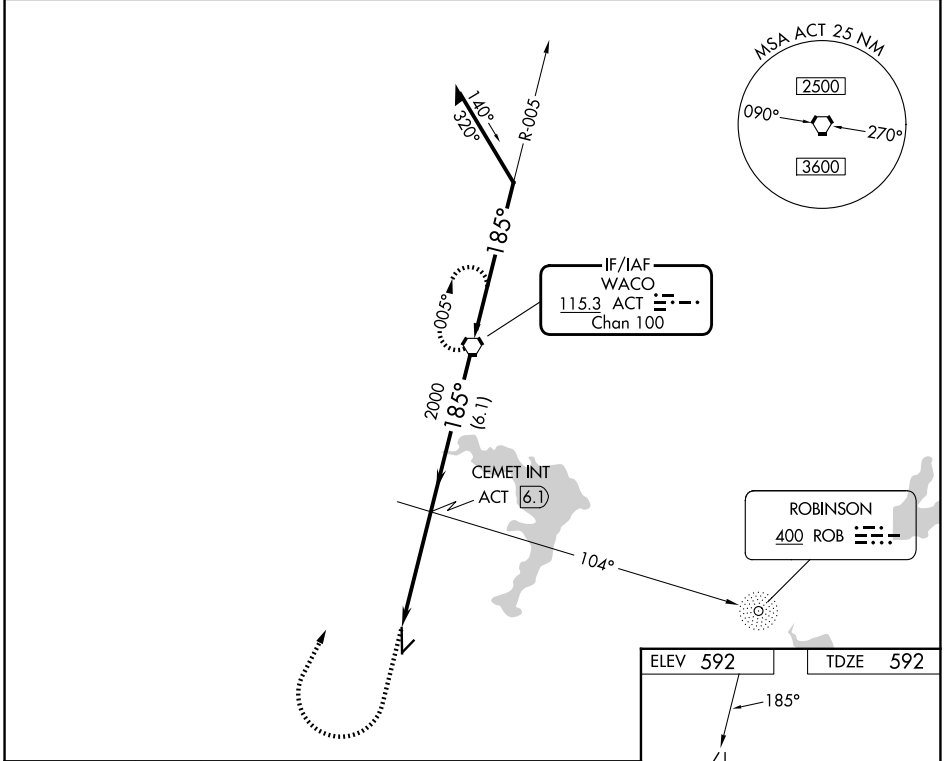


VORTAC ACT	APP CRS	Rwy Ldg	5501
115.3	185°	TDZE	592
Chan 100		Apt Elev	592

VOR RWY 17

MC GREGOR EXEC (PWG)

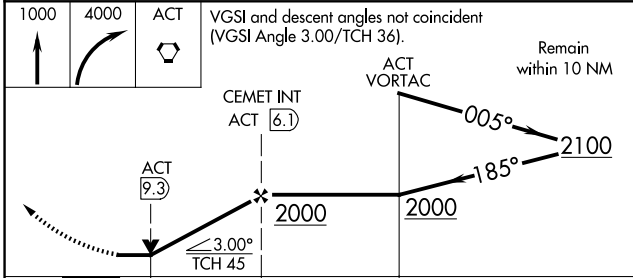
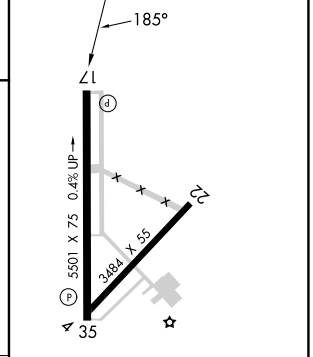
ADF or DME required.		MISSED APPROACH: Climb to 1000 then climbing right turn to 4000 direct ACT VORTAC and hold, continue climb-in-hold to 4000.
ASR		
AWOS-3PT 135.525	WACO APP CON★ 127.65 352.0	UNICOM 123.05 (CTAF) 0



IF/IAF
WACO
115.3 ACT ---
Chan 100

ROBINSON
400 ROB ---

ELEV 592	TDZE 592
----------	----------



CATEGORY	A	B	C	D
S-17	980-1	388 (400-1)	980-1 1/8 388 (400-1 1/8)	NA
CIRCLING	980-1 388 (400-1)	1060-1 468 (500-1)	1300-2 708 (800-2)	NA

REIL Rwy 17 0	MIRL Rwy 17-35 0
FAF to MAP 4.3 NM	
Knots	60 90 120 150 180
Min:Sec	4:18 2:52 2:09 1:43 1:26

SC-3, 16 APR 2026 to 14 MAY 2026

SC-3, 16 APR 2026 to 14 MAY 2026