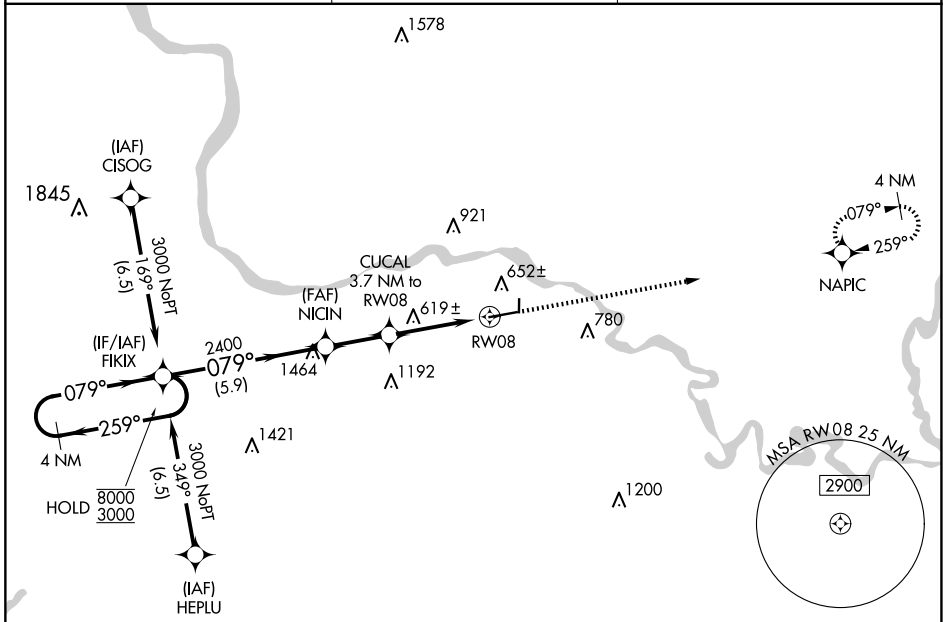


WAAS CH 97717 W08A	APP CRS 079°	Rwy Ldg TDZE Apt Elev	6002 463 465
--	------------------------	-----------------------------	---

RNAV (GPS) RWY 8

BATESVILLE RGNL (BVX)

RNP APCH - GPS.		MISSED APPROACH: Climb to 3000 direct NAPIC and hold.
<p>▼ Circling NA north of Rwy 8-26. For uncompensated Baro-VNAV systems, LNAV/VNAV NA below -15°C or above 54°C. Circling Rwy 36 NA at night. Circling NA to Rwy 18.</p> <p>▲</p>		
AWOS-3PT 126.375	MEMPHIS CENTER 126.85 281.55	UNICOM 122.8 (CTAF) 1



SC-1, 16 APR 2026 to 14 MAY 2026

SC-1, 16 APR 2026 to 14 MAY 2026

ELEV 465	TDZE 463
----------	----------

4 NM Holding Pattern

8000 ← 259°

3000 → 079°

GP 3.00° TCH 44

FIKIX

NICIN 2400

CUCAL 3.7 NM to RWY 08

1.2 NM to RWY 08

RWY 08

2400

1660

5.9 NM

2.3 NM

2.5 NM

1.2

3000

NAPIC

81

2804 X 60

26

36

6002 X 150

079°

CATEGORY	A	B	C	D
LPV DA		663-3/4	200 (200-3/4)	
LNAV/VNAV DA		713-3/4	250 (300-3/4)	
LNAV MDA	880-1	417 (500-1)	880-1 1/8	417 (500-1 1/8)
CIRCLING	980-1 515 (600-1)	1000-1 535 (600-1)	1220-2 1/4 755 (800-2 1/4)	1440-3 975 (1000-3)

REIL Rws 8 and 26 1

MIRL Rwy 8-26 1