

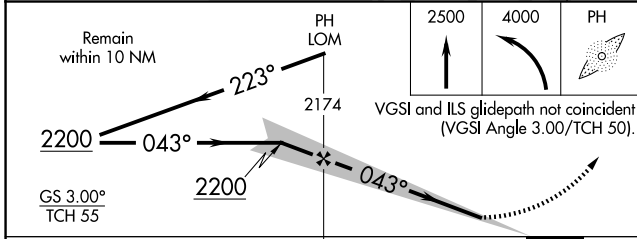
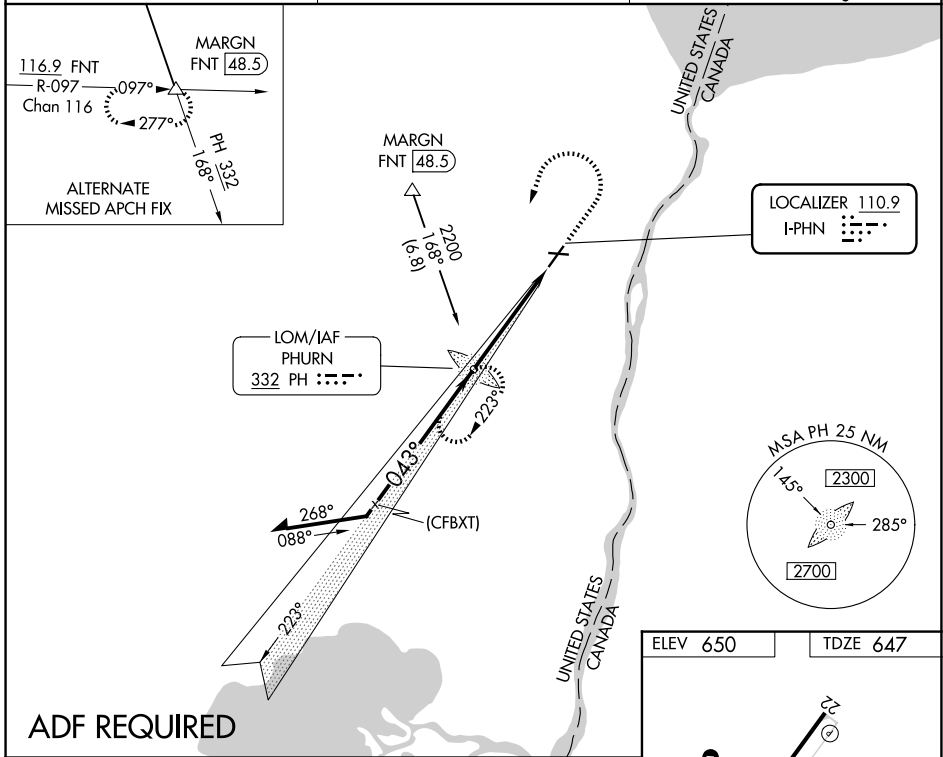
LOC I-PPHN 110.9	APP CRS 043°	Rwy Ldg 5104
		TDZE 647
		Apt Elev 650

ILS or LOC RWY 4

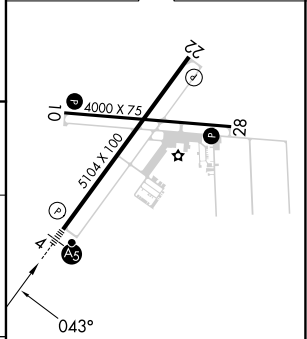
ST CLAIR COUNTY INTL (PHN)

<p>▽ ADF required. When local altimeter setting not received, use Troy altimeter setting and increase all DA 95 feet and all MDA 100 feet; increase S-LOC 4 Cats C and D and Circling Cats C and D visibility ¼ mile. For inop MALSRS when using Troy altimeter setting, increase S-ILS 4 all Cats visibility to ¾ mile. Night landing: Rwy 10, 22, 28 NA.</p>	<p>MALSRS</p>	<p>MISSED APPROACH: Climb to 2500 then climbing left turn to 4000 direct PHURN LOM and hold, continue climb-in-hold to 4000.</p>
---	----------------------	---

<p>AWOS-3P 118.375</p>	<p>SELFDRIDGE APP CON ★ 119.6 391.9</p>	<p>UNICOM 123.05 (CTAF)</p>
-----------------------------------	--	--



ELEV 650	TDZE 647
----------	----------



CATEGORY	A	B	C	D
S-ILS 4		847-½	200 (200-½)	
S-LOC 4	1100-½	453 (500-½)	1100-¾	453 (500-¾)
CIRCLING	1160-1	510 (600-1)	1260-1¼ 610 (700-1¼)	1260-2 610 (700-2)

FAF to MAP 4.6 NM					
Knots	60	90	120	150	180
Min:Sec	4:36	3:04	2:18	1:50	1:32

EC-1, 16 APR 2026 to 14 MAY 2026

EC-1, 16 APR 2026 to 14 MAY 2026