

WAAS CH 53523 W04A	APP CRS 043°	Rwy Ldg TDZE Apt Elev	5104 647 650
--	------------------------	-----------------------------	---

RNAV (GPS) RWY 4

ST CLAIR COUNTY INTL (PHN)

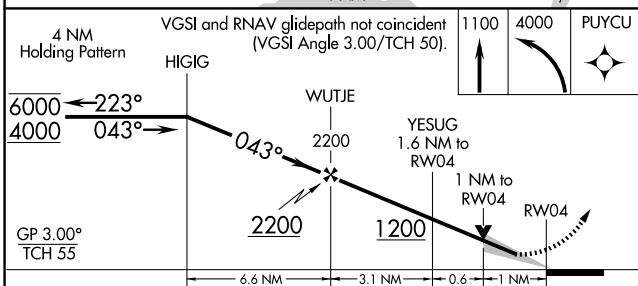
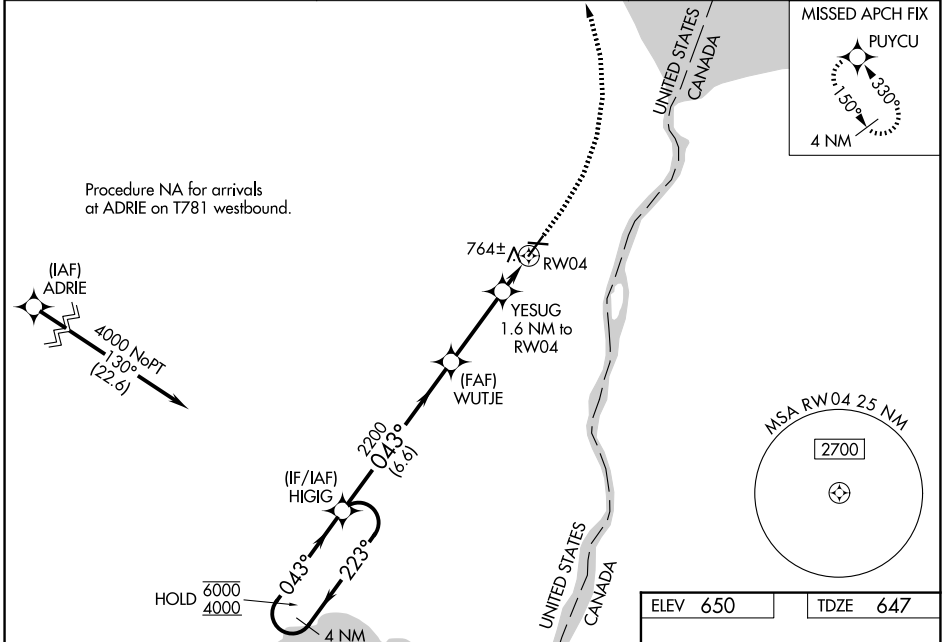
RNP APCH - GPS.

⚠ Circling Rwy 10, 22, 28 NA at night. For uncompensated Baro-VNAV systems, LNAV/VNAV NA below -16°C or above 54°C. For inop ALS, increase LNAV/VNAV all Cats visibility to 7/8 SM and LNAV Cat C/D visibility to 1 SM.

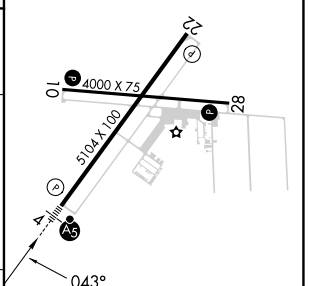
MALS R

MISSED APPROACH: Climb to 1100 then climbing left turn to 4000 direct PUYCU and hold, continue climb-in-hold to 4000.

AWOS-3P 118.375	SELFRIEDGE APP CON * 119.6 391.9	UNICOM 123.05 (CTAF)
---------------------------	--	--------------------------------



ELEV 650	TDZE 647
----------	----------



CATEGORY	A	B	C	D
LPV DA	847-1/2		200 (200-1/2)	
LNAV/VNAV DA	930-1/2		283 (300-1/2)	
LNAV MDA	1020-1/2	373 (400-1/2)	1020-5/8	373 (400-5/8)
CIRCLING	1160-1	510 (600-1)	1260-1 3/4 610 (700-1 3/4)	1260-2 610 (700-2)

HIRL Rwy 4-22

MIRL Rwy 10-28

REIL Rws 10, 22, and 28

EC-1, 16 APR 2026 to 14 MAY 2026

EC-1, 16 APR 2026 to 14 MAY 2026