

WAAS CH 60934 W36A	APP CRS 004°	Rwy Ldg TDZE Apt Elev	3800 832 835
--	------------------------	-----------------------------	---

RNAV (GPS) RWY 36

DUPONT/LAPEER (D95)

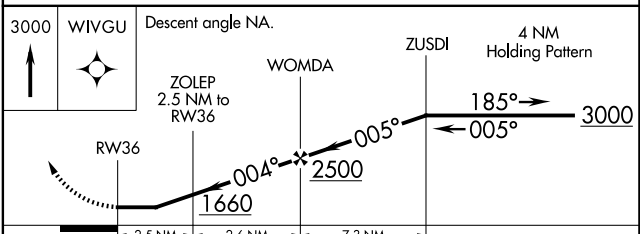
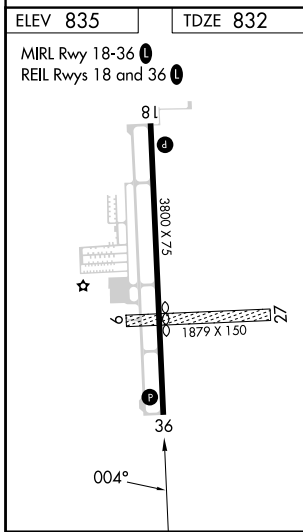
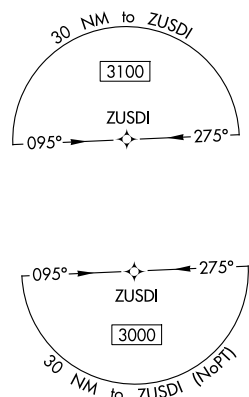
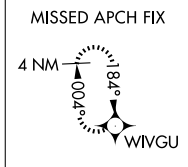
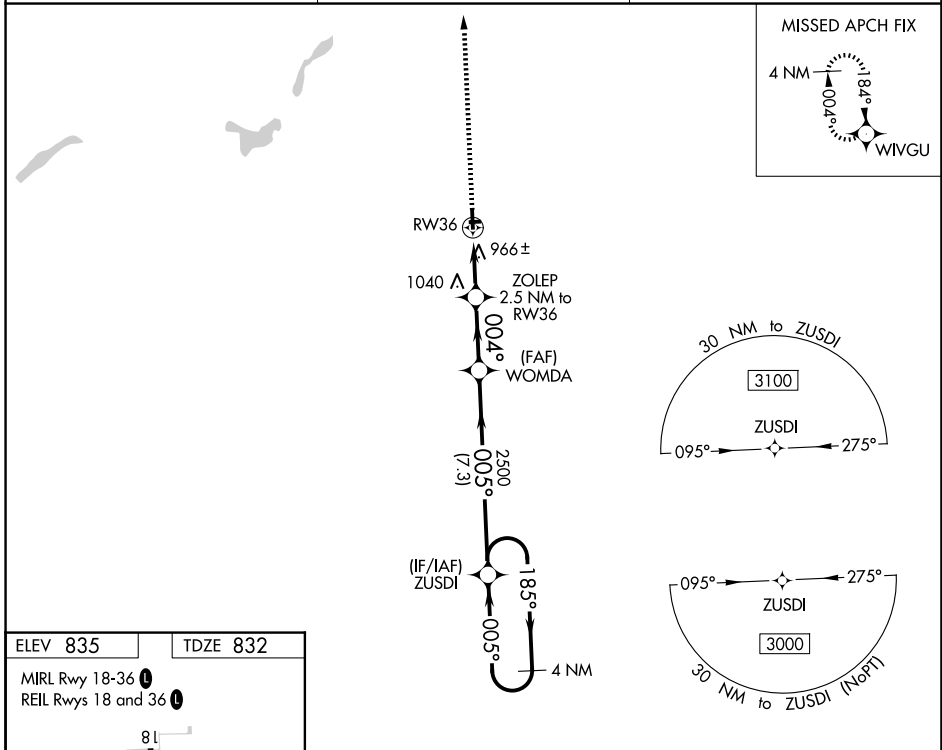
▽ DME/DME RNP-0.3 NA. Helicopter visibility reduction below ¾ SM NA. When local altimeter setting not received, use Flint altimeter setting and increase all MDA 60 feet and increase LNAV Cat C visibility ½ mile and LP Cat C and Circling Cat C visibility ¼ mile. Circling NA to Rwy 9 and 27.

MISSED APPROACH:
Climb to 3000 direct WIVGU and hold.

AWOS-3P
134.050

GREAT LAKES APP CON ★
118.8 257.9

UNICOM
123.0 (CTAF) 0



CATEGORY	A	B	C	D
LP MDA	1220-1	388 (400-1)	1220-1½ 388 (400-1½)	NA
LNAV MDA	1260-1	428 (500-1)	1260-1¼ 428 (500-1¼)	NA
CIRCLING	1300-1 465 (500-1)	1380-1 545 (600-1)	1460-1¾ 625 (700-1¾)	NA

EC-1, 16 APR 2026 to 14 MAY 2026

EC-1, 16 APR 2026 to 14 MAY 2026