

LAPEER, MICHIGAN

AL-5446 (FAA)

26078

VORTAC FNT 116.9 Chan 116	APP CRS 080°	Rwy Ldg TDZE Apt Elev N/A N/A 835
-----------------------------------------------	------------------------	-----------------------------------------------------------------------

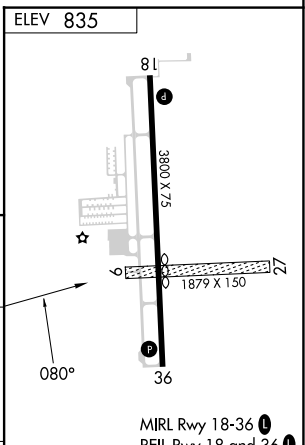
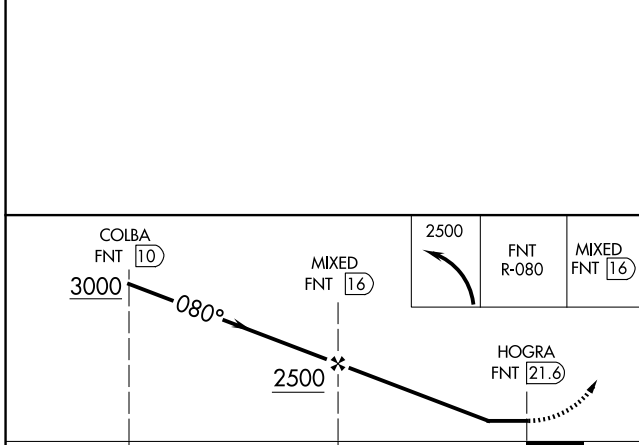
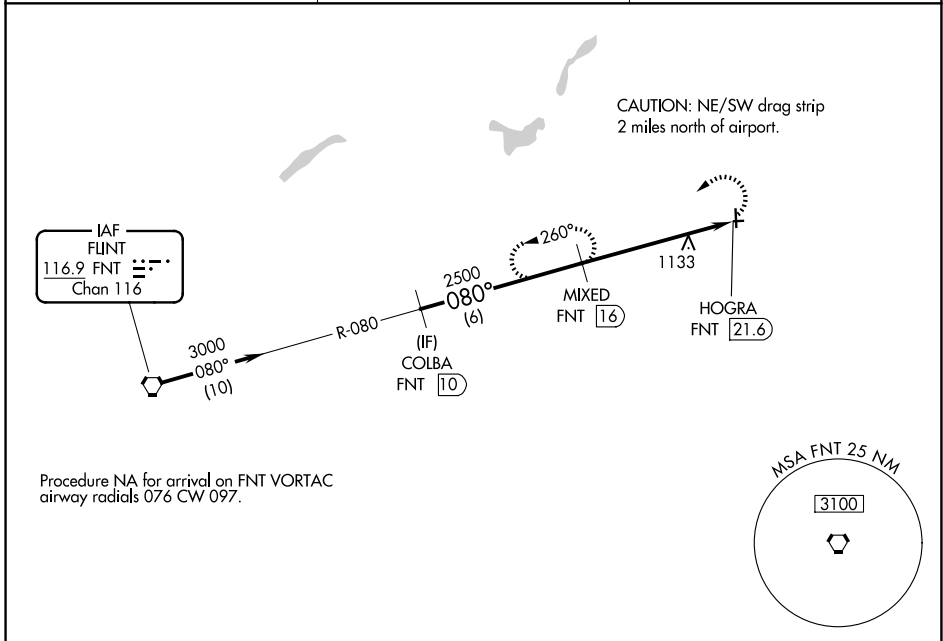
VOR-A
DUPONT/LAPEER (D95)

DME required.

⚠ Circling NA to Rwy 9 and 27. Circling Rwy 18 NA at night. Rwy 18 helicopter visibility reduction below 1 SM NA.

MISSED APPROACH: Climbing left turn to 2500 on FNT VORTAC R-080 to MIXED 16 DME and hold.

AWOS-3P 134.050	GREAT LAKES APP CON ★ 118.8 257.9	UNICOM 123.0 (CTAF) 0
---------------------------	---------------------------------------------	----------------------------------------



CATEGORY	A		B		C		D		FAF to MAP 5.6 NM					
	1400-1		565 (600-1)		1460-1¾ 625 (700-1¾)		NA		Knots	60	90	120	150	180
CIRCLING									Min:Sec	5:36	3:44	2:48	2:14	1:52

LAPEER, MICHIGAN
Amdt 1 13SEP18

43°04'N-83°16'W

DUPONT/LAPEER (D95)
VOR-A

EC-1, 16 APR 2026 to 14 MAY 2026

EC-1, 16 APR 2026 to 14 MAY 2026