

WAAS CH 63123 W10A	APP CRS 104°	Rwy Ldg TDZE 1192 Apt Elev 1192	5504 1192 1192
----------------------------------------	------------------------	-----------------------------------------------------	-------------------------------------------

RNAV (GPS) RWY 10

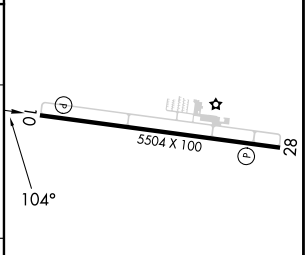
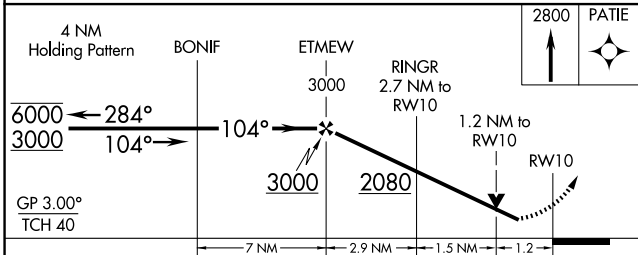
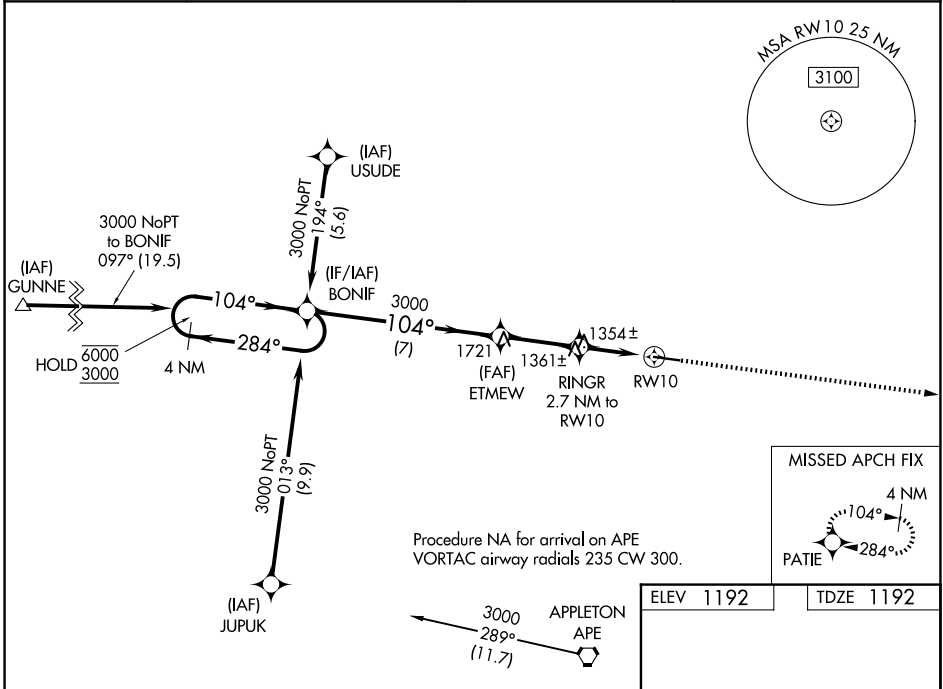
KNOX COUNTY (4I3)

RNP APCH - GPS.

⚠ Rwy 10 helicopter visibility reduction below ¾ SM NA. For uncompensated Baro-VNAV systems, LNAV/VNAV NA below -17°C or above 54°C.

MISSED APPROACH: Climb to 2800 direct PATIE and hold.

AWOS-3PT 126.05	COLUMBUS APP CON 125.95 317.775	CLNC DEL 119.45	UNICOM 123.05 (CTAF) 0
---------------------------	-------------------------------------------	---------------------------	----------------------------------



CATEGORY	A	B	C	D
LPV DA	1520-1		328 (400-1)	
LNAV/VNAV DA	1599-1½		407 (500-1½)	
LNAV MDA	1620-1 428 (500-1)		1620-1¼ 428 (500-1¼)	

EC-2, 16 APR 2026 to 14 MAY 2026

EC-2, 16 APR 2026 to 14 MAY 2026