

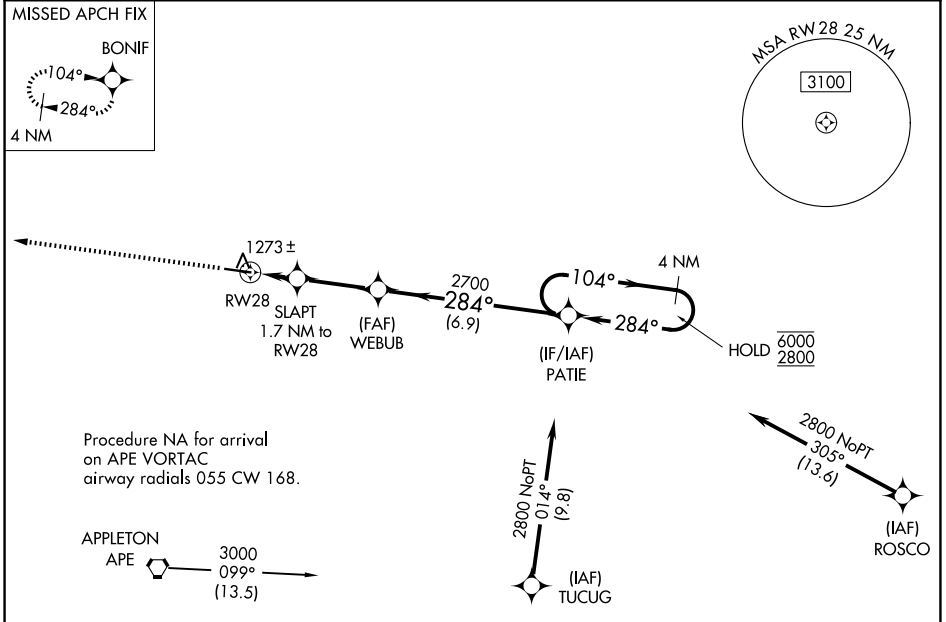
WAAS CH 69423 W28A	APP CRS 284°	Rwy Ldg TDZE Apt Elev	5504 1189 1191
--	------------------------	-----------------------------	---

RNAV (GPS) RWY 28

KNOX COUNTY (4I3)

RNP APCH. ▼ For uncompensated Baro-VNAV systems, LNAV/VNAV NA below -17°C or above 36°C.		MISSED APPROACH: Climb to 3000 direct BONIF and hold.	
---	--	---	--

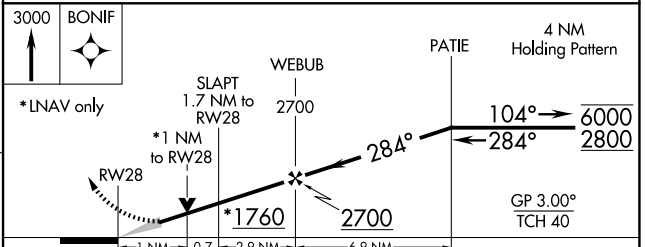
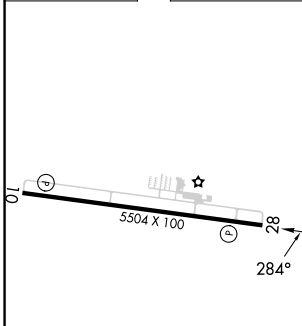
AWOS-3PT 126.05	COLUMBUS APP CON 125.95 317.775	CLNC DEL 119.45	UNICOM 123.05 (CTAF) 0
---------------------------	---	---------------------------	----------------------------------



EC-2, 16 APR 2026 to 14 MAY 2026

EC-2, 16 APR 2026 to 14 MAY 2026

ELEV 1191	TDZE 1189
-----------	-----------



	1 NM	0.7	2.9 NM	6.9 NM	
CATEGORY	A		B		C
LPV DA	1389-1		200 (200-1)		
LNAV/VNAV DA	1439-1		250 (300-1)		
LNAV MDA	1540-1		351 (400-1)		