

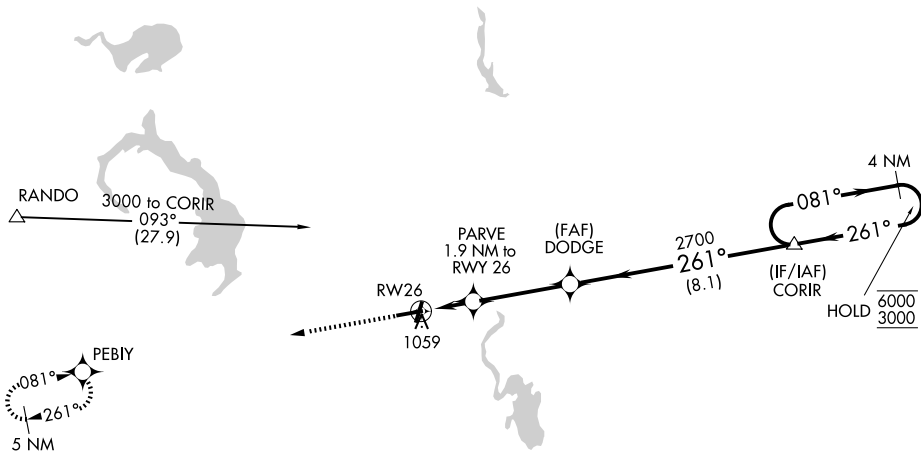
APP CRS	Rwy Ldg	5070
261°	TDZE	934
	Apt Elev	934

RNAV (GPS) RWY 26

DODGE COUNTY(UNU)

RNP APCH - GPS.		MALSF	MISSED APPROACH: Climb to 3000 direct PEBIY and hold.
AWOS-3 120.825	MADISON APP CON * 119.15 343.7	UNICOM 122.7 (CTAF)	

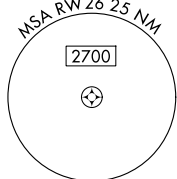
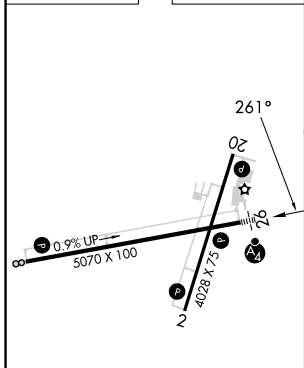
Procedure NA for arrivals at RANDO on V9-341 southwest bound and V170 northwest bound.



EC-3, 16 APR 2026 to 14 MAY 2026

EC-3, 16 APR 2026 to 14 MAY 2026

ELEV 934	TDZE 934
----------	----------



3000	PEBIY	VGSI and descent angles not coincident (VGSI Angle 3.00/TCH 35).		4 NM Holding Pattern
	PARVE 1.9 NM to RWY 26	DODGE	CORIR	
	1.1 NM to RWY 26	3.00° TCH 40	2700	081° → 6000 ← 261° 3000
	1.1 NM	0.8	3.5 NM	8.1 NM
CATEGORY	A	B	C	D
LNAV MDA	1320-3/4	386 (400-3/4)	1320-7/8 386 (400-7/8)	NA
CIRCLING	1420-1	486 (500-1)	1420-1 1/2 486 (500-1 1/2)	NA

REIL Rwy 2, 8, and 20
MIRL Rwy 8-26 and 2-20