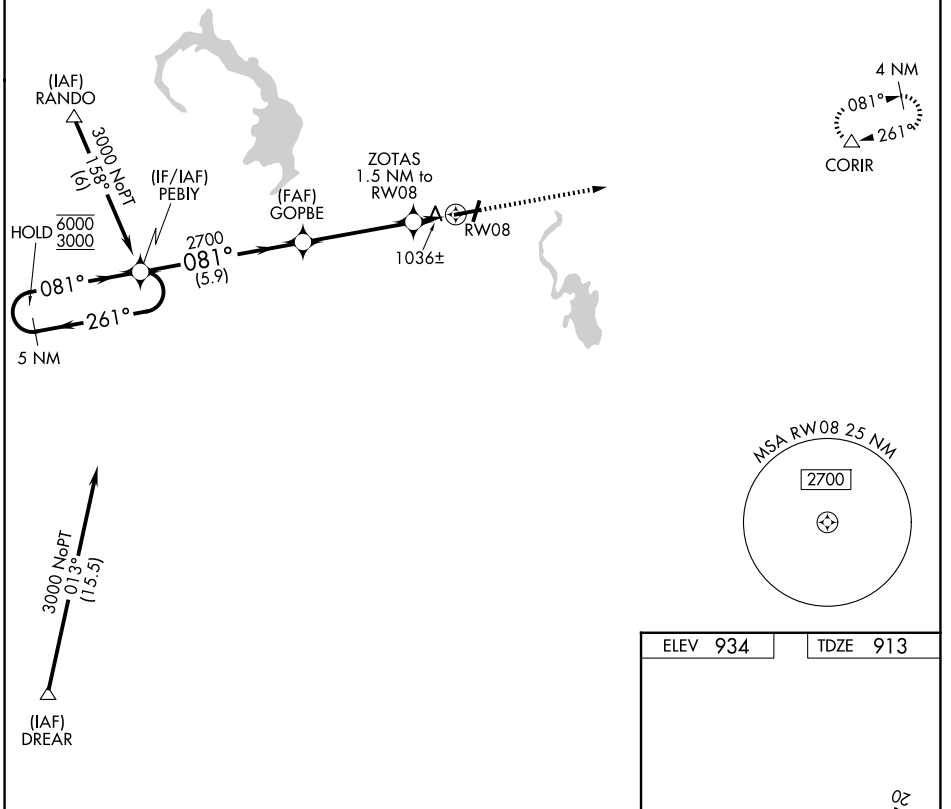


| | | |
|-------------|----------|-------------|
| APP CRS | Rwy Ldg | 5070 |
| 081° | TDZE | 913 |
| | Apt Elev | 934 |

RNAV (GPS) RWY 8

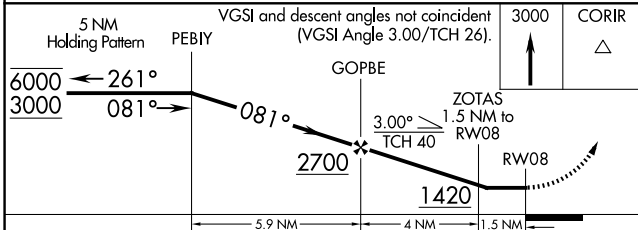
DODGE COUNTY(UNU)

| | | |
|---|--|---|
| RNP APCH - GPS. | | MISSED APPROACH: Climb to 3000 direct CORIR and hold. |
| <p>▽ ▲</p> Rwy 8 helicopter visibility reduction below ¾ SM NA. | | |
| AWOS-3 120.825 | MADISON APP CON * 119.15 343.7 | UNICOM 122.7 (CTAF) 0 |



EC-3, 16 APR 2026 to 14 MAY 2026

EC-3, 16 APR 2026 to 14 MAY 2026



| | |
|----------|----------|
| ELEV 934 | TDZE 913 |
|----------|----------|

| CATEGORY | A | B | C | D |
|----------|--------|-------------|-------------------------|----|
| LNAV MDA | 1320-1 | 407 (400-1) | 1320-1½ 407 (400-1½) | NA |
| CIRCLING | 1420-1 | 486 (500-1) | 1420-1½ 486 (500-1½) | NA |

REIL Rwy 2, 8, and 20
MIRL Rwy 8-26 and 2-20