

WAAS CH 97445 W32A	APP CRS 317°	Rwy Idg TDZE Apt Elev	3504 933 933
--	------------------------	-----------------------------	---

RNAV (GPS) RWY 32

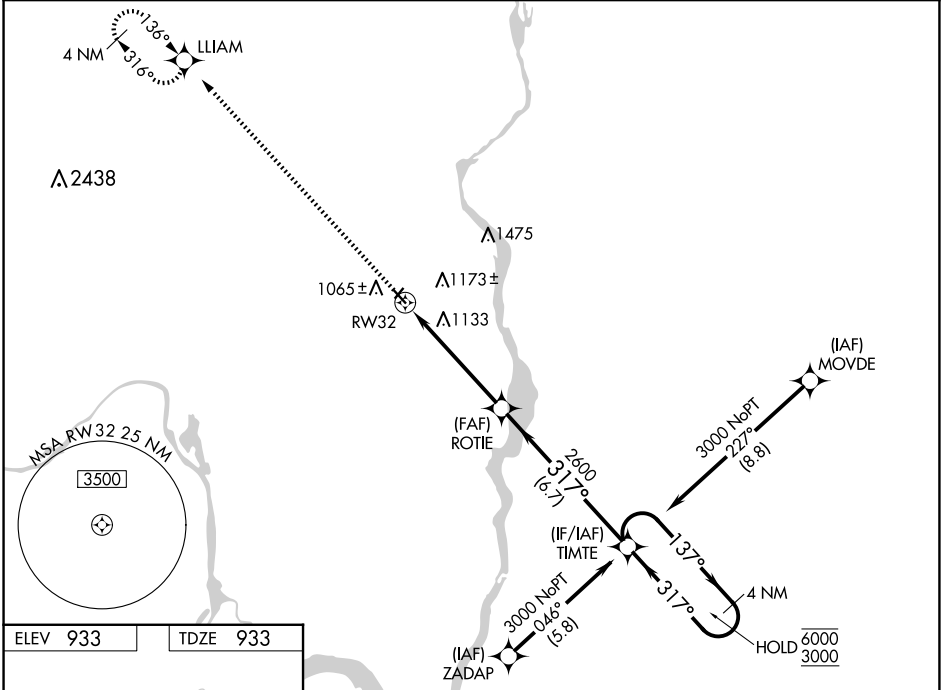
LAKE ELMO (21D)

RNP APCH - GPS.

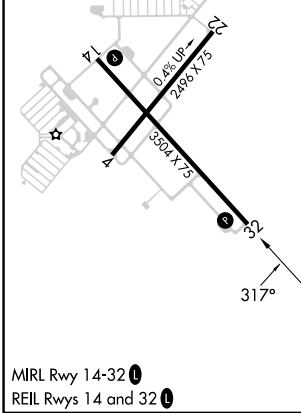
⚠ Rwy 32 helicopter visibility reduction below 3/4 SM NA. For uncompensated Baro-VNAV systems, LNAV/VNAV NA below -16°C or above 54°C. Circling Rwy 4, 22 NA at night.

MISSED APPROACH: Climb to 3000 direct LLIAM and hold.

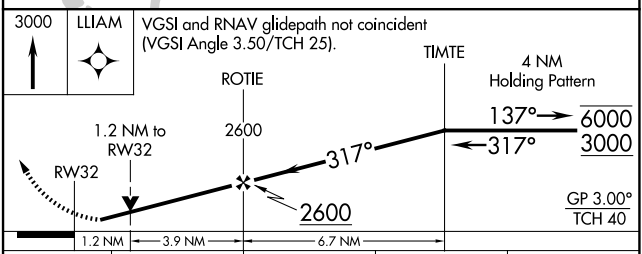
AWOS-3 120.075	MINNEAPOLIS APP CON 121.2 335.65	CLNC DEL 118.625	UNICOM 123.075 (CTAF)
--------------------------	--	----------------------------	---------------------------------



ELEV 933	TDZE 933
----------	----------



MIRL Rwy 14-32
REIL Rwy 14 and 32



CATEGORY	A	B	C	D
LPV DA	1209-1	276 (300-1)		NA
LNAV/VNAV DA	1404-1 3/8	471 (500-1 3/8)		NA
LNAV MDA	1400-1	467 (500-1)		NA
CIRCLING	1440-1 507 (600-1)	1500-1 567 (600-1)		NA

NC-1, 16 APR 2026 to 14 MAY 2026

NC-1, 16 APR 2026 to 14 MAY 2026