

RNAV 1 - DME/DME/IRU or GPS.

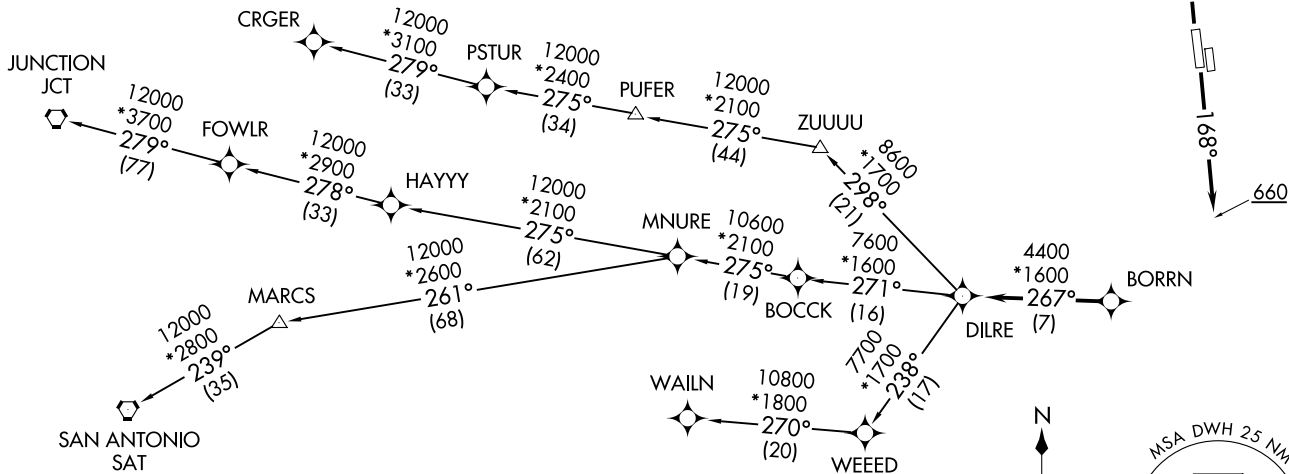
RADAR required.

**TOP ALTITUDE:
ASSIGNED BY ATC**

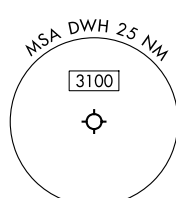
TAKEOFF MINIMUMS

Rwys 17L, 35R: NA - Environmental.
Waterways 17, 35: NA - Air Traffic.
Rwys 17R, 35L: Standard with minimum
climb of 500'/NM to 660.

ATIS
128.375
CLNIC DEL
119.45
GND CON
121.8 239.0
HOOKS TOWER *
127.4 354.1 (EAST)
118.4 (CTAF) 354.1 (WEST)
HOUSTON DEP CON
123.8 257.7 (Rwys 17L/R)
119.7 281.4 (Rwys 35L/R)



NOTE: CRGER-TRANSITION ATC assigned only for aircraft departing 54T, AXH, EFD, GLS, HPY, IWS, LBX, LVJ, SGR, TME, TØØ, T41.



NOTE: Chart not to scale.

(CONTINUED ON FOLLOWING PAGE)

BORRN SIX DEPARTURE (RNAV)
(BORRN6.BORRN) 30NOV23

DAVID WAYNE HOOKS MEML (DWH)
HOUSTON, TEXAS

(BORRN6.BORRN) 25051
BORRN SIX DEPARTURE (RNAV)

AL-5457 (FAA)
DAVID WAYNE HOOKS MEML (DWH)
HOUSTON, TEXAS

BORRN SIX DEPARTURE (RNAV)



DEPARTURE ROUTE DESCRIPTION

TAKEOFF RUNWAY 17R: Climb on heading 168° to 660, for RADAR vectors to BORRN, thence. . . .

TAKEOFF RUNWAY 35L: Climb on heading 348° to 660, for RADAR vectors to BORRN, thence. . . .

. . . .on track 267° to DILRE, then on (transition). Maintain ATC assigned altitude. Expect filed altitude 10 minutes after departure.

CRGER TRANSITION (BORRN6.CRGER)

JUNCTION TRANSITION (BORRN6.JCT)

MNURE TRANSITION (BORRN6.MNURE)

SAN ANTONIO TRANSITION (BORRN6.SAT)

WAILN TRANSITION (BORRN6.WAILN)

SC-5, 16 APR 2026 to 14 MAY 2026

SC-5, 16 APR 2026 to 14 MAY 2026