


CRIED ONE DEPARTURE

AL-5457 (FAA)


DAVID WAYNE HOOKS MEML (DWH)
HOUSTON, TEXAS


ATIS
128.375
CLNC DEL
119.45
GND CON
121.8 239.0
HOOKS TOWER ★
127.4 354.1 (EAST)
118.4 (CTAF) 354.1 (WEST)
HOUSTON DEP CON
119.7 281.4

**TOP ALTITUDE:
ASSIGNED BY ATC**

CEDAR CREEK
114.8 CQY 
Chan 95

LUFKIN
112.1 LFK 
Chan 58

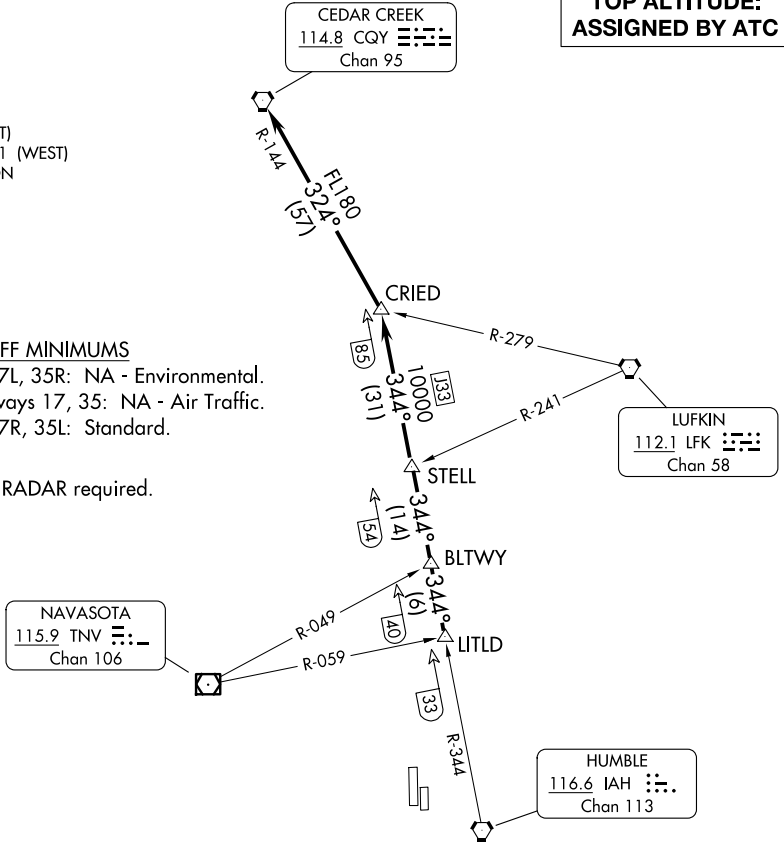
NAVASOTA
115.9 TNV 
Chan 106

HUMBLE
116.6 IAH 
Chan 113

TAKEOFF MINIMUMS

Rwys 17L, 35R: NA - Environmental.
Waterways 17, 35: NA - Air Traffic.
Rwys 17R, 35L: Standard.

NOTE: RADAR required.



NOTE: Chart not to scale.

SC-5, 16 APR 2026 to 14 MAY 2026

SC-5, 16 APR 2026 to 14 MAY 2026



DEPARTURE ROUTE DESCRIPTION

TAKEOFF ALL RUNWAYS: When entering controlled airspace, climb on assigned heading for RADAR vectors to LITLD INT. Maintain ATC assigned altitude. Expect filed altitude 10 minutes after departure, thence

. . . . on IAH R-344 to STELL INT, then on IAH R-344 to CRIED INT, then left turn on CQY R-144 to CQY VORTAC.

CRIED ONE DEPARTURE