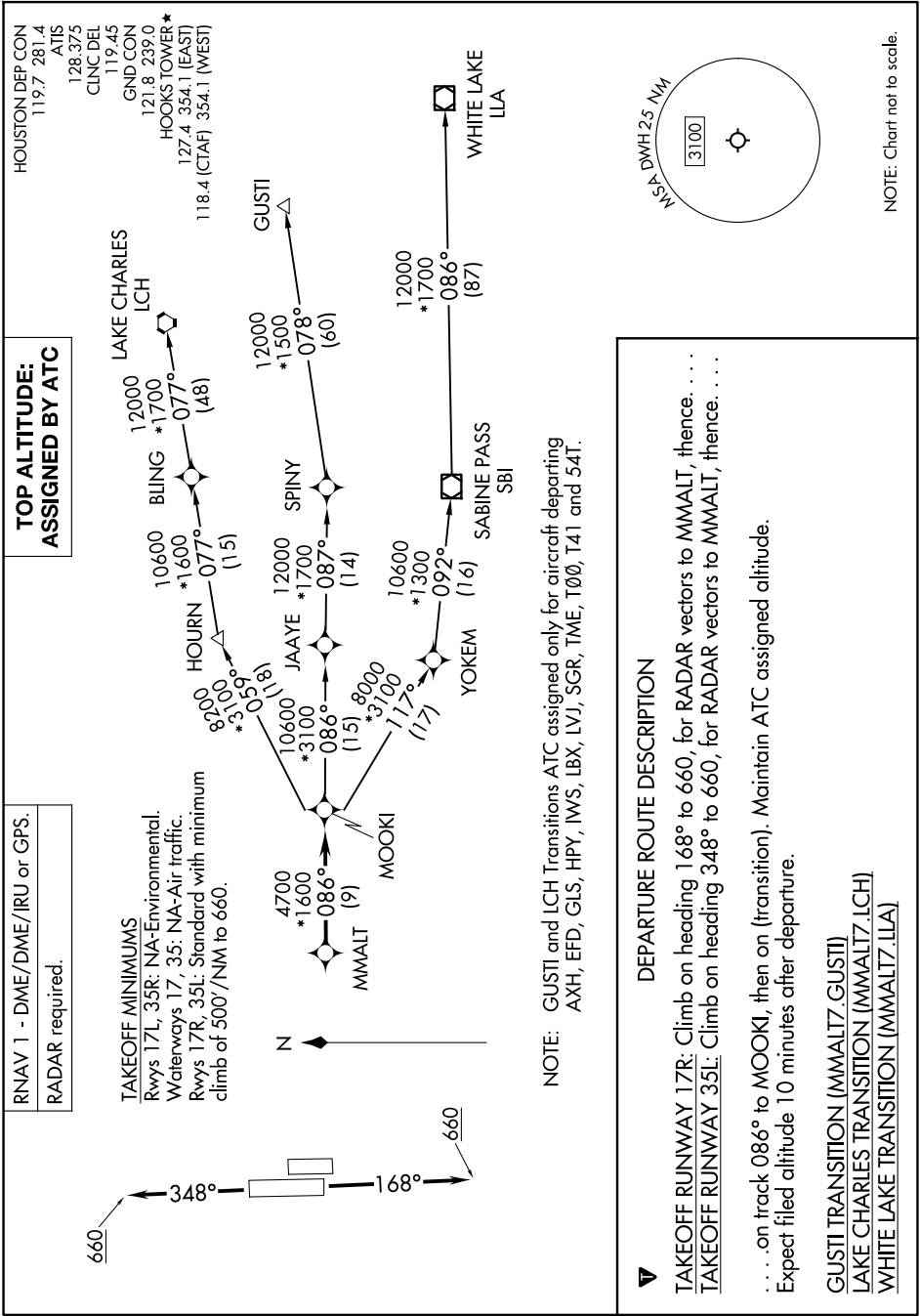


MMALT SEVEN DEPARTURE (RNAV)

AL-5457 (FAA)

HOUSTON, TEXAS

SC-5, 16 APR 2026 to 14 MAY 2026



**TOP ALTITUDE:
ASSIGNED BY ATC**

RNAV 1 - DME/DME/RU or GPS.
RADAR required.

TAKEOFF MINIMUMS
Rwys 17L, 35R: NA-Environmental.
Waterways 17, 35: NA-Air traffic.
Rwys 17R, 35L: Standard with minimum
climb of 500'/NM to 660.

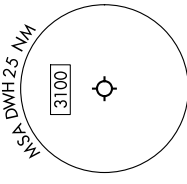
HOUSTON DEP CON
119.7 281.4
ATIS
128.375
CLNC DEL
119.45
GND CON
121.8 239.0
HOOKS TOWER*
127.4 354.1 (EAST)
118.4 (CTAF) 354.1 (WEST)

DEPARTURE ROUTE DESCRIPTION

TAKEOFF RUNWAY 17R: Climb on heading 168° to 660, for RADAR vectors to MMALT, thence. . . .
TAKEOFF RUNWAY 35L: Climb on heading 348° to 660, for RADAR vectors to MMALT, thence. . . .
 . . . on track 086° to MOOKI, then on (transition). Maintain ATC assigned altitude.
 Expect filed altitude 10 minutes after departure.

GUSTI TRANSITION (MMALT7.GUSTI)
LAKE CHARLES TRANSITION (MMALT7.LCH)
WHITE LAKE TRANSITION (MMALT7.LLA)

NOTE: GUSTI and LCH Transitions ATC assigned only for aircraft departing AXH, EFD, GLS, HPY, IWS, LBX, LVJ, SGR, TME, T00, T41 and 54T.



NOTE: Chart not to scale.

SC-5, 16 APR 2026 to 14 MAY 2026