

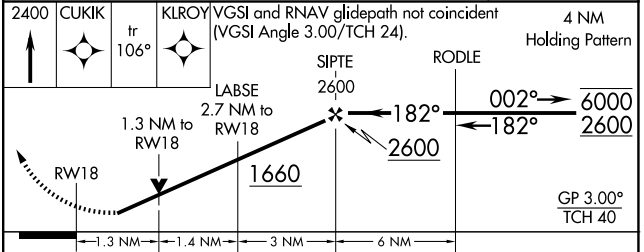
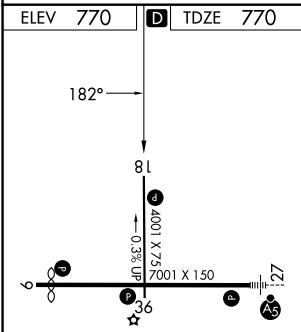
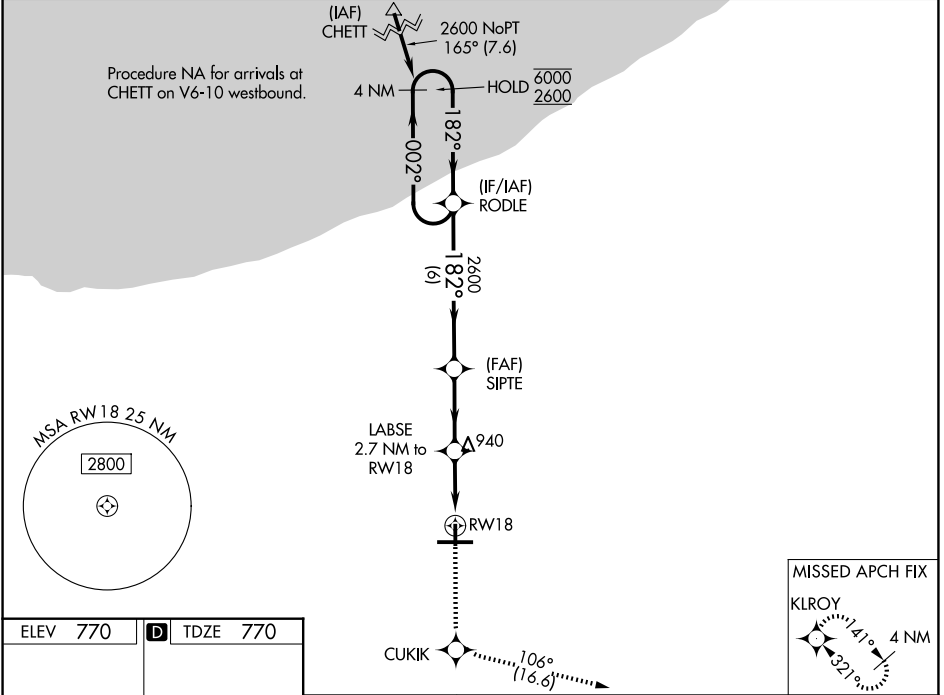
WAAS CH 82406 W18A	APP CRS 182°	Rwy Ldg TDZE Apt Elev	4001 770 770
--	------------------------	-----------------------------	---

RNAV (GPS) RWY 18

PORTER COUNTY RGNL (VPZ)

RNP APCH - GPS.		MISSED APPROACH: Climb to 2400 direct CUKIK and on track 106° to KLROY and hold.
⚠ Rwy 18 helicopter visibility reduction below 3/4 SM NA. For uncompensated Baro-VNAV systems, LNAV/VNAV NA below -21°C or above 54°C.		

ASOS 125,875	SOUTH BEND APP CON ★ 132,05 257,8	UNICOM 122,725 (CTAF) 0
------------------------	---	-----------------------------------



CATEGORY	A	B	C	D
LPV DA	1059-7/8	289 (300-7/8)		NA
LNAV/VNAV DA	1200-1 1/4	430 (500-1 1/4)		NA
LNAV MDA	1200-1	430 (500-1)		NA
CIRCLING	1260-1 490 (500-1)	1300-1 530 (600-1)		NA

HIRL Rwy 9-27 **1**
MIRL Rwy 18-36 **1**
REIL Rwys 9, 18 and 36 **1**

EC-2, 16 APR 2026 to 14 MAY 2026

EC-2, 16 APR 2026 to 14 MAY 2026