

WAAS CH 86806 W27A	APP CRS 272°	Rwy Ldg TDZE Apt Elev	6500 770 770
--	------------------------	-----------------------------	---

RNAV (GPS) RWY 27

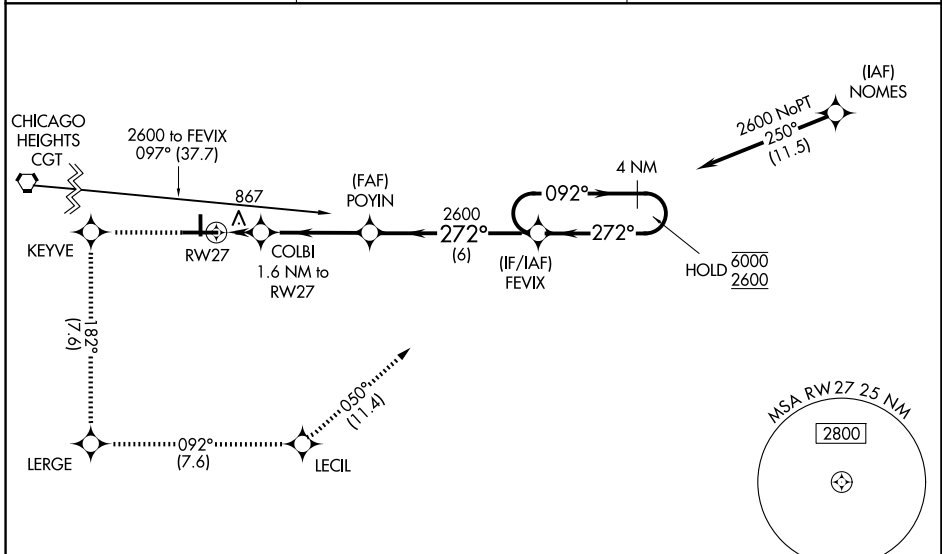
PORTER COUNTY RGNL (VPZ)

RNP APCH - GPS.

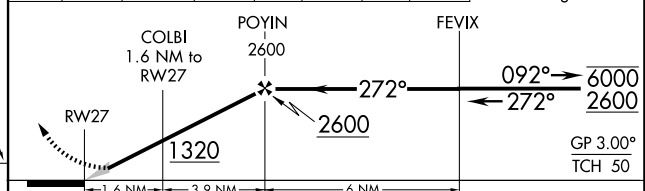
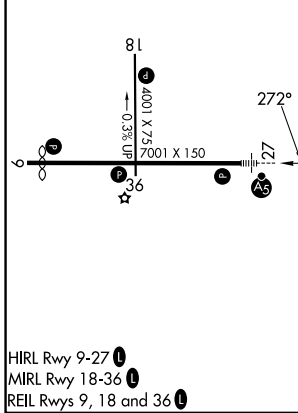
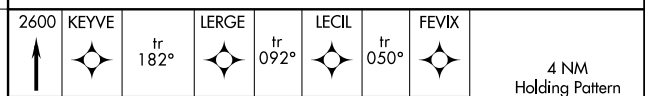
MALSR

MISSED APPROACH: Climb to 2600 direct KEYVE and on track 182° to LERGE and on track 092° to LECIL and on track 050° to FEVIX and hold.

ASOS 125.875	SOUTH BEND APP CON ★ 132.05 257.8	UNICOM 122.725 (CTAF) 1
------------------------	---	-----------------------------------



ELEV 770	D	TDZE 770
----------	----------	----------



CATEGORY	A	B	C	D
LPV DA		1020-1/2	250 (300 -1/2)	
LNAV/VNAV DA		1201-3/4	431 (500 -3/4)	
LNAV MDA	1180-1/2	410 (500 -1/2)	1180-3/4	410 (500-3/4)
CIRCLING	1260-1 490 (500-1)	1300-1 530 (600-1)	1360-1 1/2 590 (600-1 1/2)	1620-2 3/4 850 (900-2 3/4)

HIRL Rwy 9-27 1
MIRL Rwy 18-36 1
REIL Rws 9, 18 and 36 1

EC-2, 16 APR 2026 to 14 MAY 2026

EC-2, 16 APR 2026 to 14 MAY 2026