

WAAS CH 42606 W09A	APP CRS 092°	Rwy Ldg TDZE Apt Elev	6500 769 770
--	------------------------	-----------------------------	---

RNAV (GPS) RWY 9

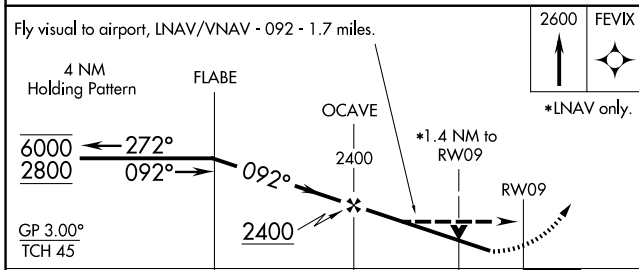
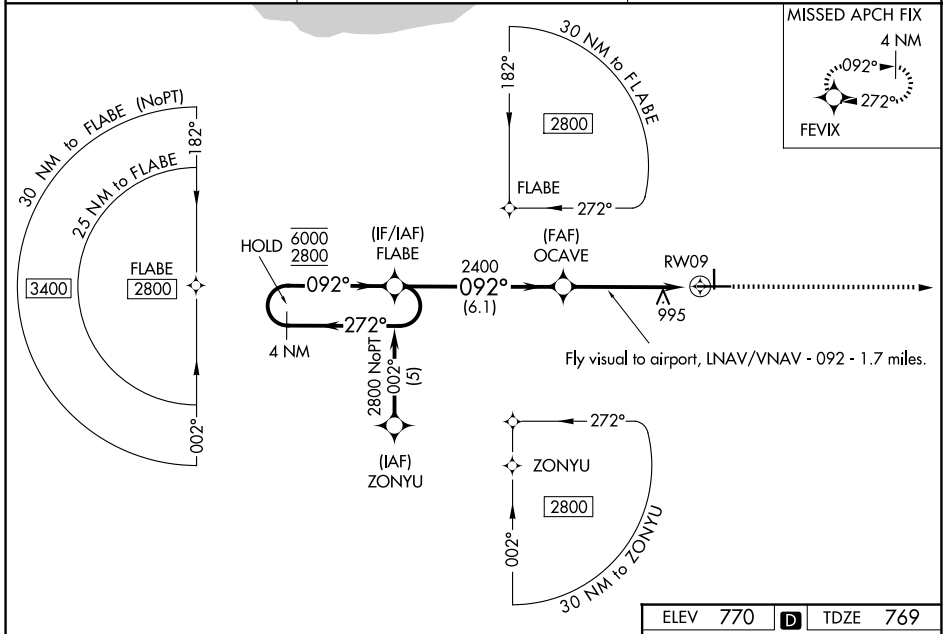
PORTER COUNTY RGNL (VPZ)

RNP APCH.

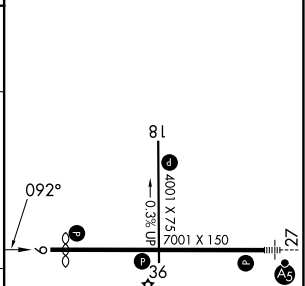
⚠ Rwy 9 helicopter visibility reduction below 3/4 SM NA. For uncompensated Baro-VNAV systems, LNAV/VNAV NA below -16°C or above 47°C.

MISSED APPROACH:
Climb to 2600 direct FEVIX and hold.

ASOS 125.875	SOUTH BEND APP CON ★ 132.05 257.8	UNICOM 122.725 (CTAF) 0
------------------------	---	-----------------------------------



ELEV 770	D	TDZE 769
----------	----------	----------



CATEGORY	A	B	C	D
LPV DA		1038-1	269 (300-1)	
LNAV/VNAV DA		1369-2	600 (600-2)	
LNAV MDA	1260-1	491 (500-1)	1260-1½ 491 (500-1½)	1260-1½ 491 (500-1½)
CIRCLING	1260-1 490 (500-1)	1300-1 530 (600-1)	1360-1½ 590 (600-1½)	1620-2¾ 850 (900-2¾)

HIRL Rwy 9-27 **0**
MIRL Rwy 18-36 **0**
REIL Rws 9, 18 and 36 **0**

EC-2, 16 APR 2026 to 14 MAY 2026

EC-2, 16 APR 2026 to 14 MAY 2026