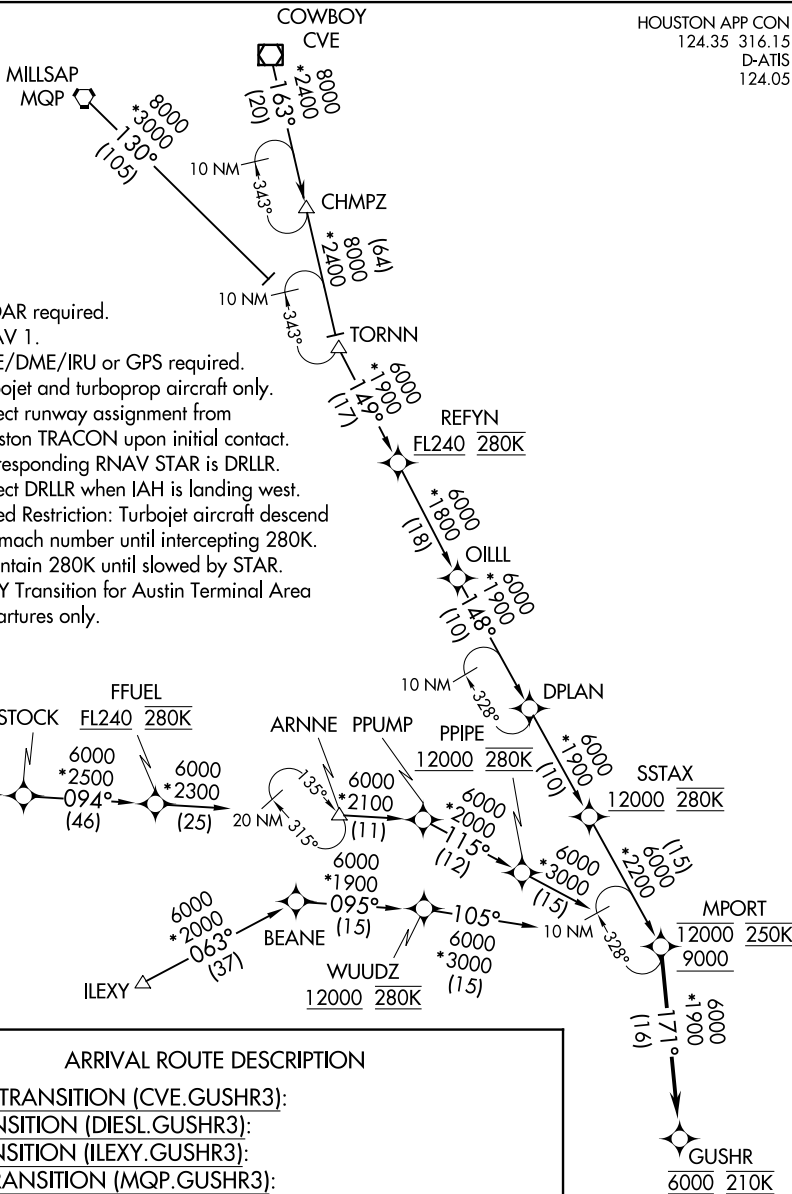


HOUSTON APP CON  
124.35 316.15  
D-ATIS  
124.05



- NOTE: RADAR required.
- NOTE: RNAV 1.
- NOTE: DME/DME/IRU or GPS required.
- NOTE: Turbojet and turboprop aircraft only.
- NOTE: Expect runway assignment from Houston TRACON upon initial contact.
- NOTE: Corresponding RNAV STAR is DRLLR. Expect DRLLR when IAH is landing west.
- NOTE: Speed Restriction: Turbojet aircraft descend via mach number until intercepting 280K. Maintain 280K until slowed by STAR.
- NOTE: ILEXY Transition for Austin Terminal Area departures only.

**ARRIVAL ROUTE DESCRIPTION**

- COWBOY TRANSITION (CVE.GUSHR3):
- DIESEL TRANSITION (DIESEL.GUSHR3):
- ILEXY TRANSITION (ILEXY.GUSHR3):
- MILLSAP TRANSITION (MQP.GUSHR3):
- OIILL TRANSITION (OIILL.GUSHR3):
- TORNN TRANSITION (TORNN.GUSHR3):

From MPORT on track 171° to cross GUSHR at 6000 and at 210K.  
Expect ILS or LOC Rwy 08L.

NOTE: Chart not to scale.