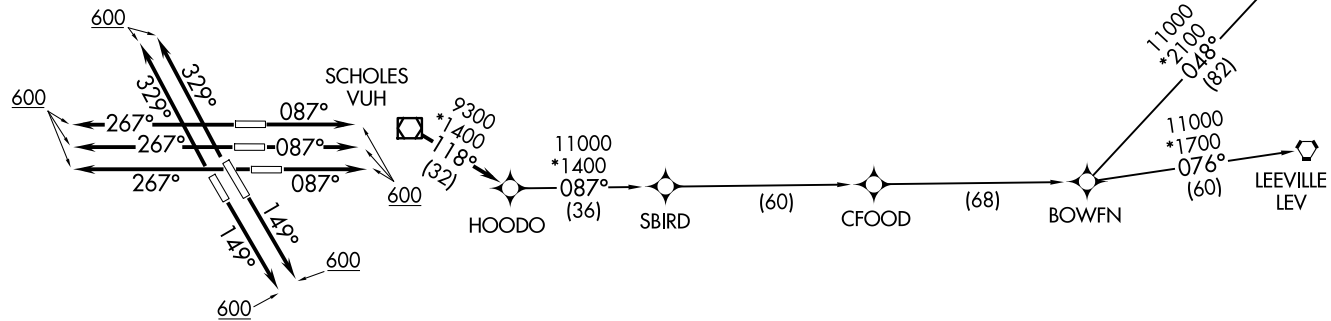
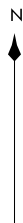


HOODO SEVEN DEPARTURE (RNAV)
(HOODO07.HOODO) 07OCT21
HOUSTON, TEXAS
GEORGE BUSH INT/CNTL/HOUSTON (IAH)

D-ATIS
124.05
CLNC DEL
128.1
CPDLC
GND CON
118.575 (Rwys 8L/R, 9, 26L/R, 27)
121.7 (Rwys 15L/R, 33L/R)
HOUSTON TOWER
120.725 290.2 (Rwys 8L, 26R)
125.35 290.2 (Rwys 8R, 26L)
127.3 288.25 (Rwys 15L/R, 33L/R)
135.15 290.2 (Rwys 9, 27)
HOUSTON DEP CON
127.125 269.075

NOTE: RNAV 1.
NOTE: RADAR required.
NOTE: ATC assigned only.
NOTE: DME/DME/IRU or GPS required.
NOTE: For non-GPS equipped aircraft, LCH, LLA, TBD, and LEV DME's must be operational.

TOP ALTITUDE:
16000



TAKEOFF MINIMUMS
Rwys 8L/R, 9, 15L/R, 26L/R, 27, 33L/R:
Standard with minimum climb of 500' per NM to 600.

NOTE: Chart not to scale.

(NARRATIVE ON FOLLOWING PAGE)

(HOODO07.HOODO) 21280
HOODO SEVEN DEPARTURE (RNAV)
AL-5461 (FAA)
HOUSTON, TEXAS
GEORGE BUSH INT/CNTL/HOUSTON (IAH)



DEPARTURE ROUTE DESCRIPTION

TAKEOFF RUNWAYS 8L/R, 9: Climb on heading 087° to 600, for RADAR vectors to VUH VOR/DME, thence

TAKEOFF RUNWAYS 15L/R: Climb on heading 149° to 600, for RADAR vectors to VUH VOR/DME, thence

TAKEOFF RUNWAYS 26L/R, 27: Climb on heading 267° to 600, for RADAR vectors to VUH VOR/DME, thence

TAKEOFF RUNWAYS 33L/R: Climb on heading 329° to 600, for RADAR vectors to VUH VOR/DME, thence

. . . . on track 118° to HOODO, then on (transition). Maintain 16000.

Expect filed altitude 10 minutes after departure.

BOWFN TRANSITION (HOODO7.BOWFN)

CFOOD TRANSITION (HOODO7.CFOOD)

HARVEY TRANSITION (HOODO7.HRV)

LEEVILLE TRANSITION (HOODO7.LEV)

SBIRD TRANSITION (HOODO7.SBIRD)

SC-5, 16 APR 2026 to 14 MAY 2026

SC-5, 16 APR 2026 to 14 MAY 2026