

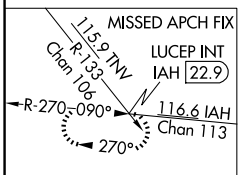
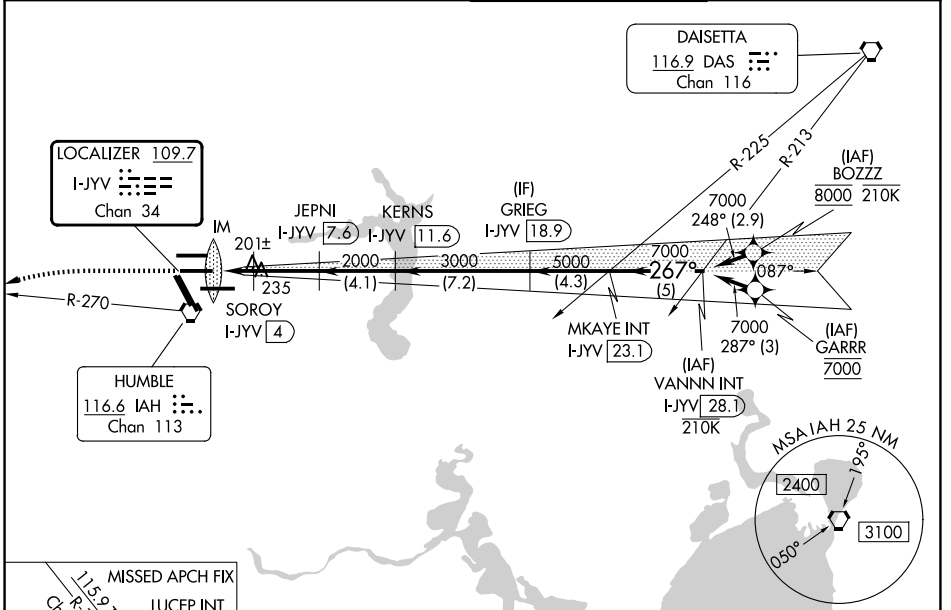
LOC/DME I-JYV <b>109.7</b> Chan <b>34</b>	APP CRS <b>267°</b>	Rwy Ldg TDZE Apt Elev	<b>9402</b> <b>95</b> <b>96</b>
---	------------------------	-----------------------------	---------------------------------------

# ILS or LOC RWY 26L

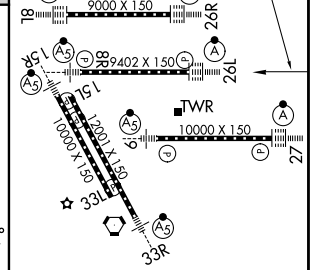
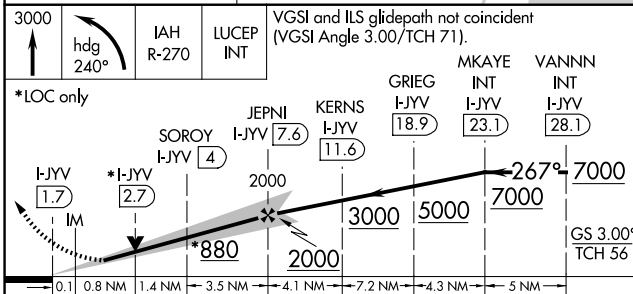
GEORGE BUSH INTCNL/HOUSTON (IAH)

DME required. From BOZZZ, GARRR: RNAV 1-GPS required.	ALSIF-2 	MISSED APPROACH: Climb to 3000 then left turn heading 240° and IAH VORTAC R-270 to LUCEP INT/IAH 22.9 DME and hold.
<p>Simultaneous approach authorized with Rwy 26R and Rwy 27. For inop ALS, increase S-ILS 26L Cat E visibility to RVR 4000, S-LOC 26L Cat C/D/E visibility to RVR 5000.</p>		

D-ATIS <b>124.05</b>	HOUSTON APP CON <b>120.05 379.1 E</b> <b>124.35 316.15 W</b>	HOUSTON TOWER <b>125.35 290.2</b>	GND CON <b>118.575</b>
-------------------------	--	--------------------------------------	---------------------------



ELEV 96	<b>D</b>	TDZE 95
---------	----------	---------



CATEGORY	A	B	C	D	E
S-ILS 26L	295/18		200 (200-½)		
S-LOC 26L	460/24	365 (400-½)	460/35	365 (400-¾)	

FDZ/Cl Rwsy 8R, 8L, 15R, 26R, 26L, 27 and 33L					
HIRL all Rwsy					
FAF to MAP 5.8 NM					
Knots	60	90	120	150	180
Min:Sec	5:48	3:52	2:54	2:19	1:56

SC-5, 16 APR 2026 to 14 MAY 2026

SC-5, 16 APR 2026 to 14 MAY 2026