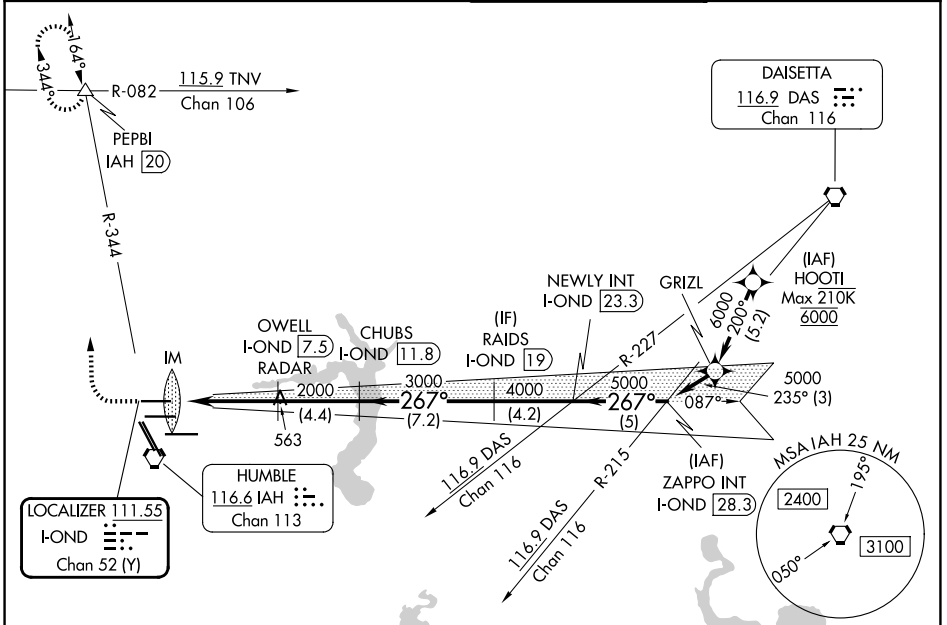


|  |                        |  |
|--|------------------------|--|
| LOC/DME I-OND<br><b>111.55</b><br>Chan <b>52 (Y)</b> | APP CRS<br><b>267°</b> | Rwy Ldg<br>TDZE<br>Apt Elev<br><b>9000</b><br><b>95</b><br><b>96</b> |
|--|------------------------|--|

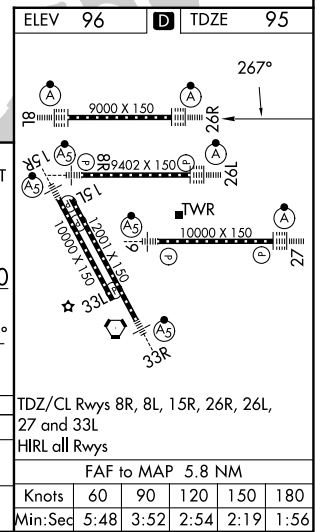
# ILS or LOC RWY 26R

GEORGE BUSH INTCNL/HOUSTON (IAH)

|  |  |                                       |  |
|--|--|---------------------------------------|--|
| DME required. From HOOI: RNAV 1-GPS required.  |  | ALSF-2<br>                            | MISSED APPROACH: Climb to 600 then climbing right turn to 3000 on IAH VORTAC R-344 to PEPBI INT/IAH 20 DME and hold. |
| <p><b>▼</b> Simultaneous approach authorized with Rwy 26L and Rwy 27. For inop ALS, increase S-ILS 26R Cat E visibility to RVR 4000, and S-LOC 26R Cat C/D/E visibility to 1 3/8 SM.</p> |  |                                       |  |
| D-ATIS<br><b>124.05</b>  | HOUSTON APP CON<br><b>120.05 379.1 E</b><br><b>124.35 316.15 W</b> | HOUSTON TOWER<br><b>120.725 290.2</b> | GND CON<br><b>118.575</b>  |



|  |                  |               |                 |                  |                |                      |                      |
|--|------------------|---------------|-----------------|------------------|----------------|----------------------|----------------------|
| ELEV 96  | <b>D</b> TDZE 95 |               |                 |                  |                |                      |                      |
| 600  | 3000             | PEPBI         | OWELL I-OND 7.5 | CHUBS I-OND 11.8 | RAIDS I-OND 19 | NEWLY INT I-OND 23.3 | ZAPPO INT I-OND 28.3 |
| <p>* LOC only</p> <p>IM I-OND 1.7</p> <p>* I-OND 2.9</p> <p>2000</p> <p>3000</p> <p>4000</p> <p>5000</p> <p>GS 3.00°</p> <p>TCH 59</p> |                  |               |                 |                  |                |                      |                      |
| CATEGORY   | A                | B             | C               | D                | E              |                      |                      |
| S-ILS 26R  | 295/18           |               | 200 (200-1/2)   |                  |                |                      |                      |
| S-LOC 26R  | 580/24           | 485 (500-1/2) | 580/50          |                  | 485 (500-1)    |                      |                      |



SC-5, 16 APR 2026 to 14 MAY 2026

SC-5, 16 APR 2026 to 14 MAY 2026

|                   |      |      |      |      |      |
|-------------------|------|------|------|------|------|
| HIRL all Rwy      |      |      |      |      |      |
| FAF to MAP 5.8 NM |      |      |      |      |      |
| Knots             | 60   | 90   | 120  | 150  | 180  |
| Min:Sec           | 5:48 | 3:52 | 2:54 | 2:19 | 1:56 |