

LOC I-CDG 111.9	APP CRS 329°	Rwy 33R Ldg 12001 TDZE 89 Apt Elev 96	Rwy 33L Ldg 10000 TDZE 90 Apt Elev 96
---------------------------	------------------------	--	--

ILS or LOC RWY 33R

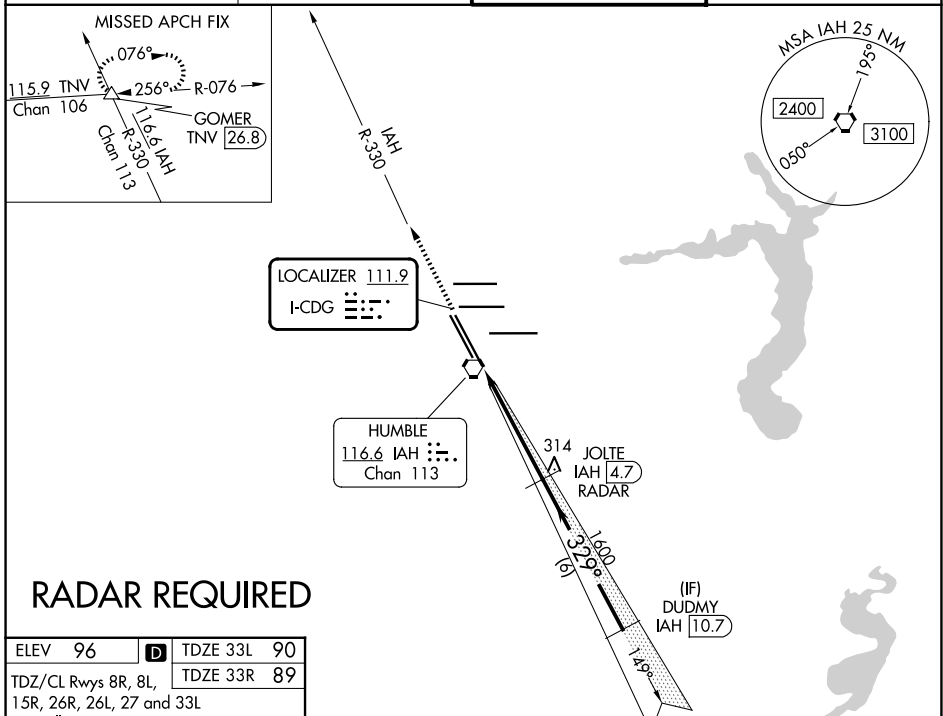
GEORGE BUSH INTCNL/HOUSTON (IAH)

▼ DME from IAH VORTAC. Simultaneous reception of I-CDG and IAH DME Required. For inop MALS R, increase S-ILS 33R Cat E visibility to RVR 4000 and S-LOC 33R Cat E visibility to 1 3/8 mile. DME or RADAR Required. #RVR 1800 authorized with the use of FD or AP or HUD to DA.

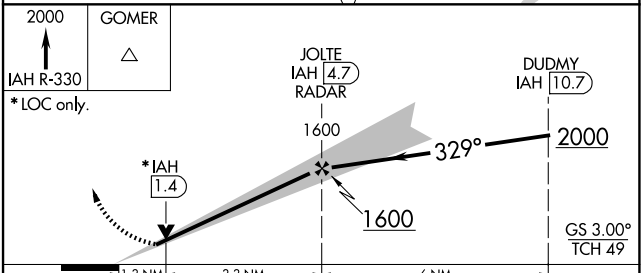
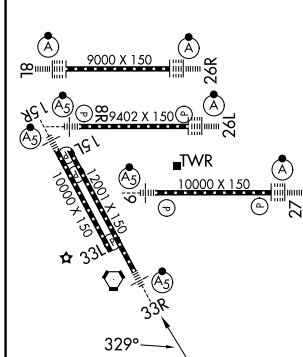
MALS R

MISSED APPROACH: Climb to 2000 on IAH VORTAC R-330 to GOMER INT/TNV 26.8 DME and hold.

D-ATIS 124.05	HOUSTON APP CON 120.05 379.1 E 124.35 316.15 W	HOUSTON TOWER 127.3 288.25	GND CON 121.7
-------------------------	--	--------------------------------------	-------------------------



ELEV 96	D	TDZE 33L 90
TDZ/CL Rwy 8R, 8L, 15R, 26R, 26L, 27 and 33L		TDZE 33R 89
HIRL all Rwys		



Category	A	B	C	D	E
S-ILS 33R	# 289/24 200 (200-1/2)				
S-LOC 33R	540/24 451 (500-1/2)	540/45 451 (500-7/8)			
SIDESTEP Rwy 33L	540-1 450 (500-1)	540-1 1/2 450 (500-1 1/2)	540-2 450 (500-2)	NA	